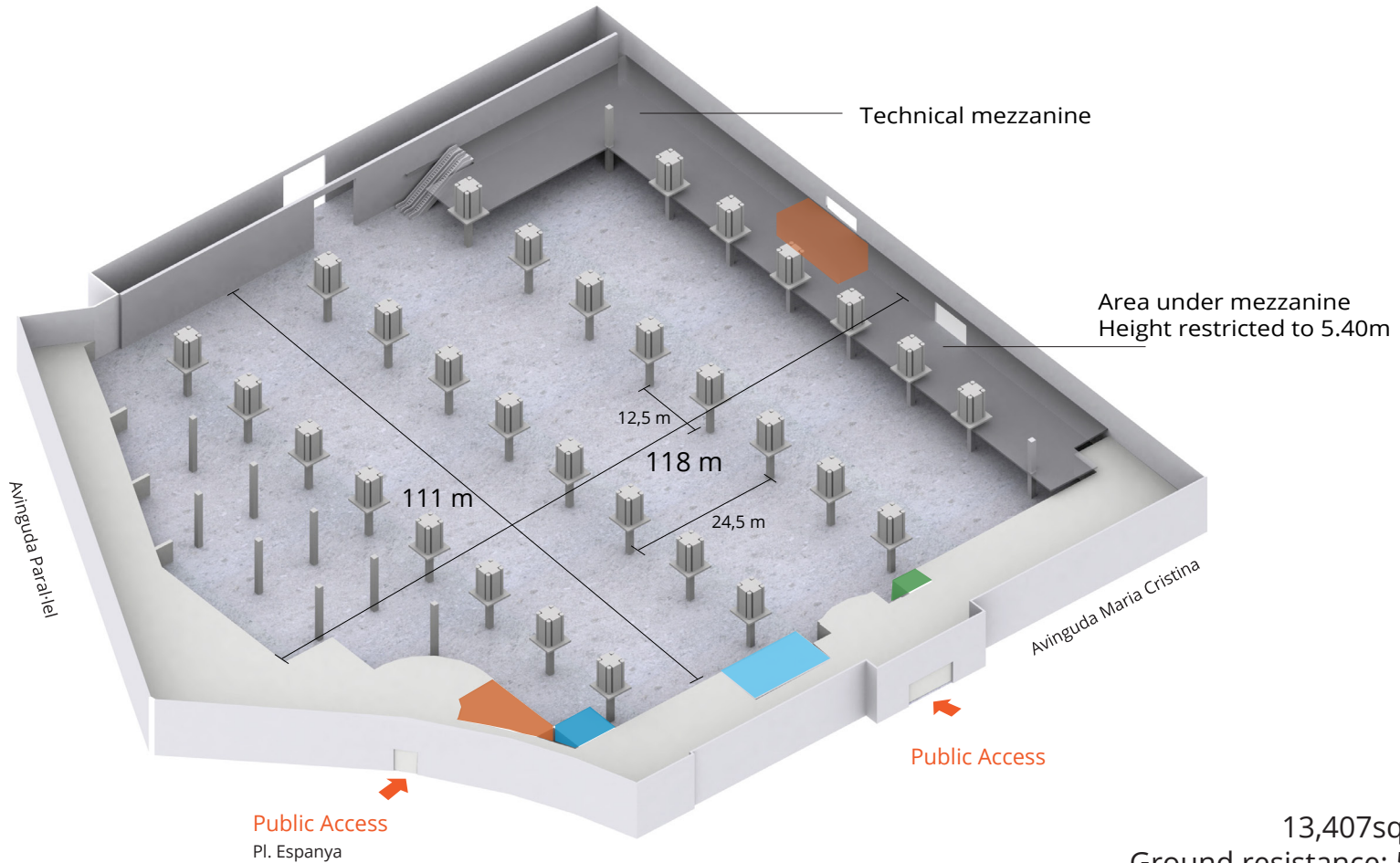
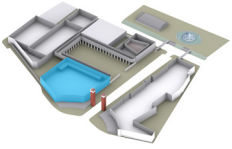


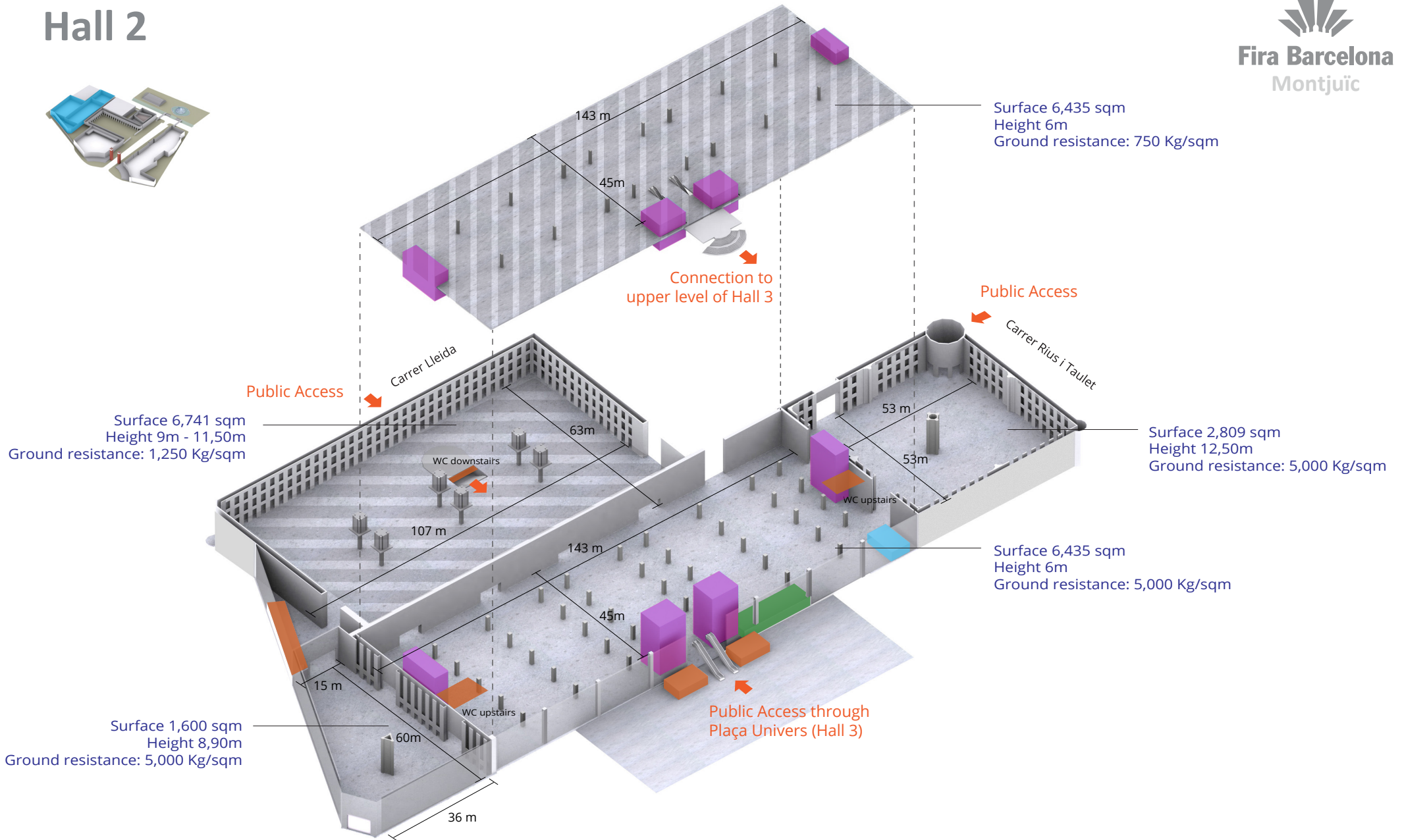
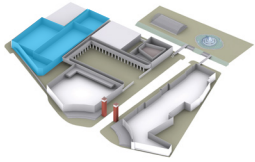
Hall 1



13,407sqm gross area
Ground resistance: 5,000 Kg/sqm
Maximum height: 13.90 m

- Toilets
- Restaurants
- Hall Manager
- Info Point / Cloakroom

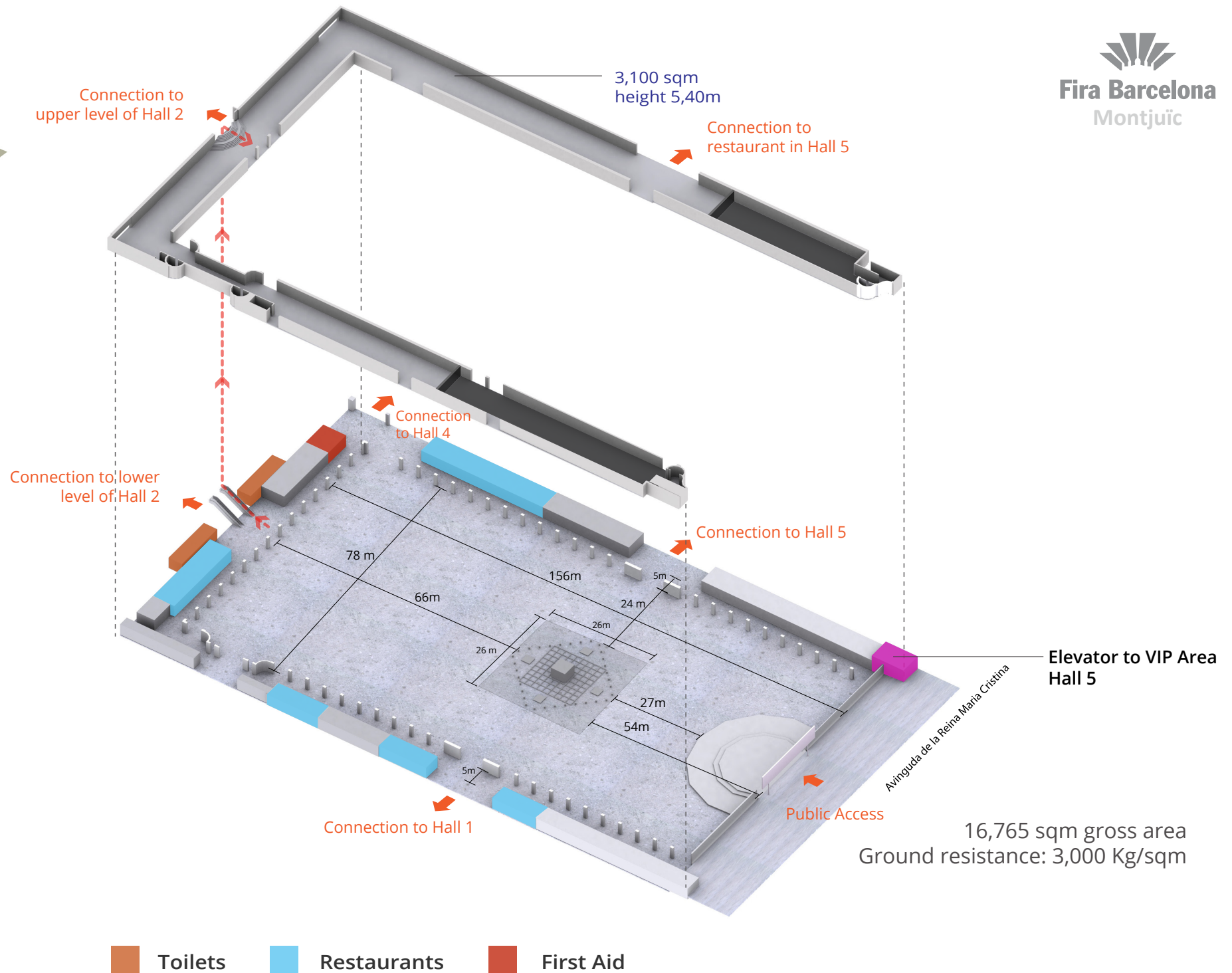
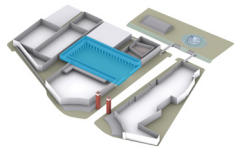
Hall 2



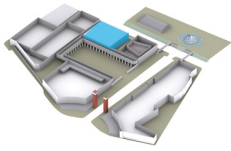
- Stairs
- Toilets
- Restaurants
- Hall Manager

18,590 sqm gross area (ground floor)
6,435 (upper floor)

Hall 3

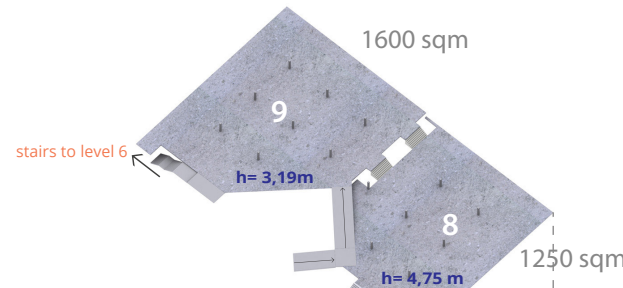


Hall 4

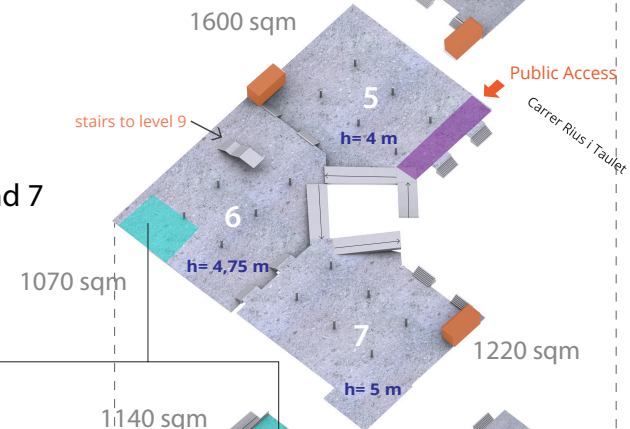


Ground resistance: 150kg/sqm
No vehicles allowed

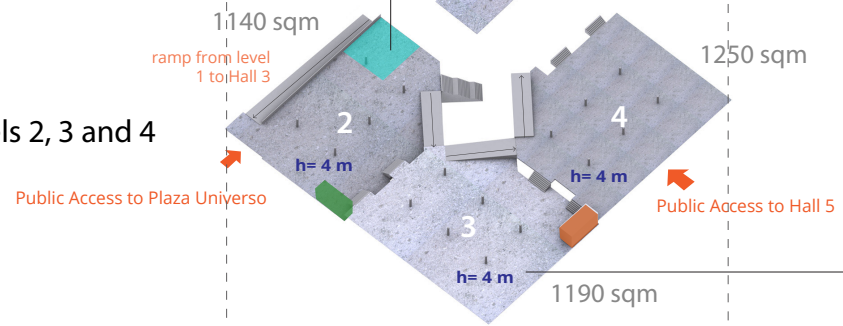
levels 8 and 9



levels 5, 6 and 7



levels 2, 3 and 4

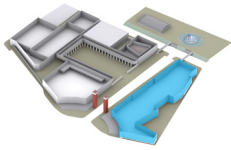



Ground resistance levels 2 to 9: 500 kg/sqm
Forklifts can only circulate along ramps and the area marked in purple on the 5th level for access

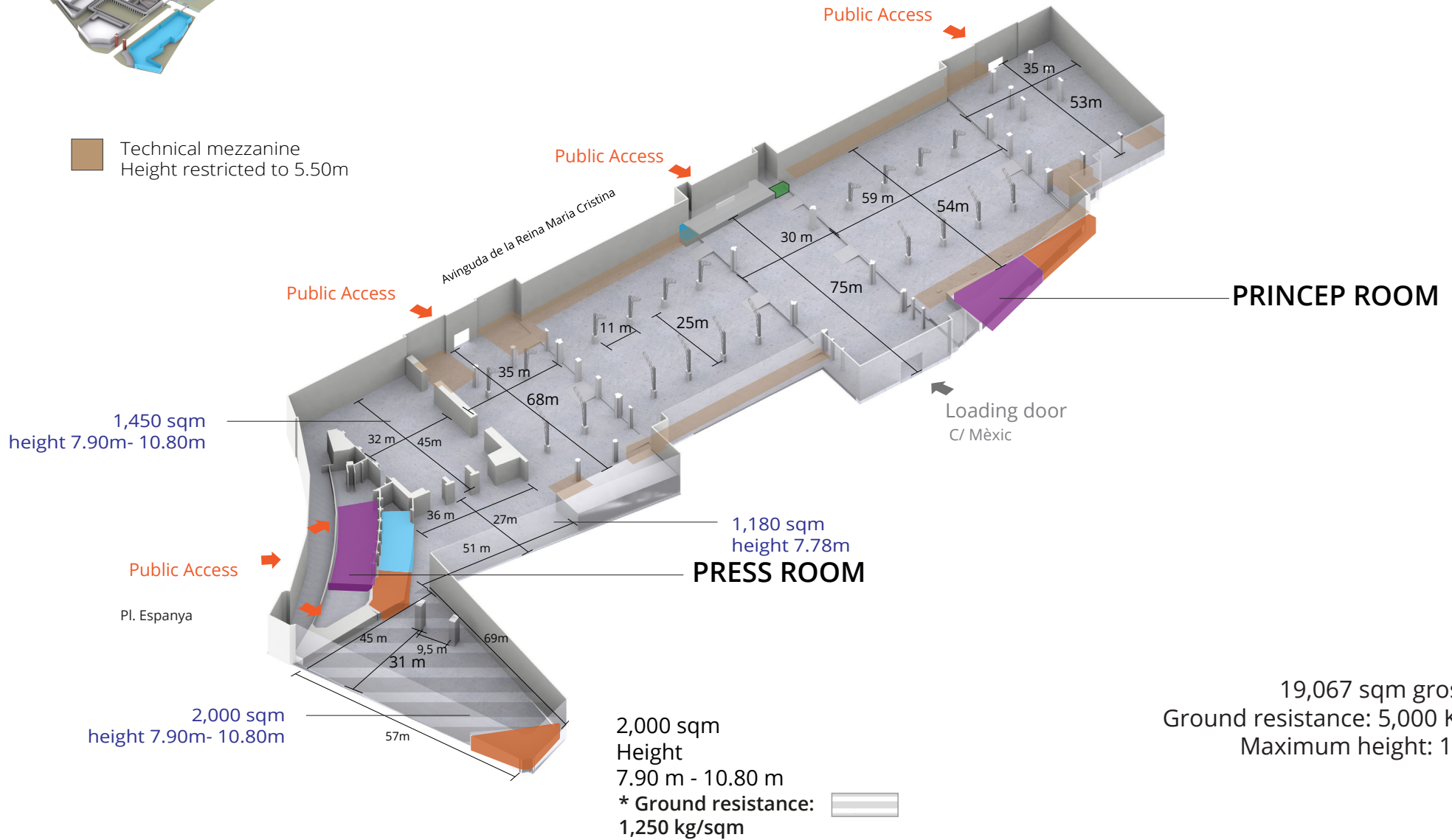
10,320 sqm gross area

Toilets Hall Manager

Hall 8

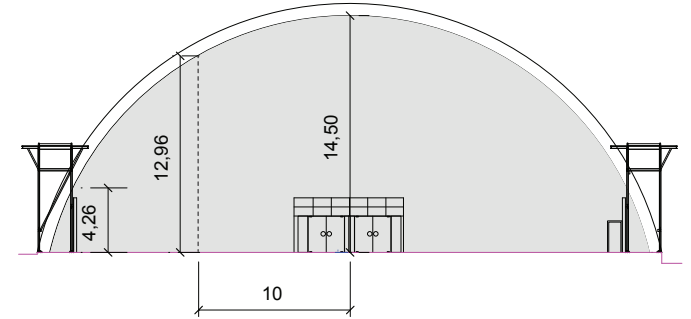
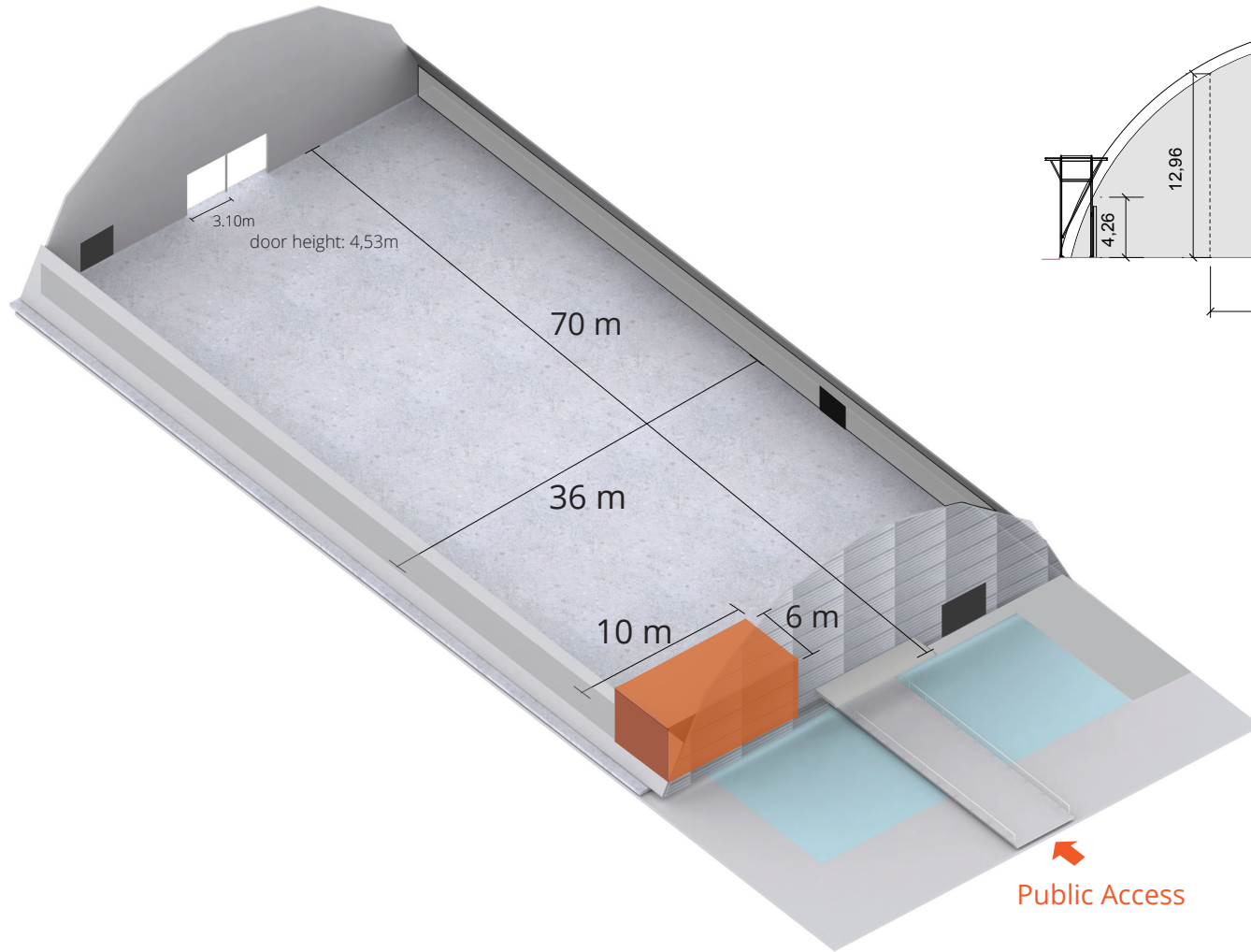
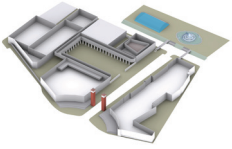


 Technical mezzanine
Height restricted to 5.50m



-  Toilets
-  Restaurants
-  Hall Manager
-  Info Point / Cloakroom

Z6



 Toilets

2,409 sqm gross area
Ground resistance: 5,000 Kg/sqm
Maximum height: 14.50 m