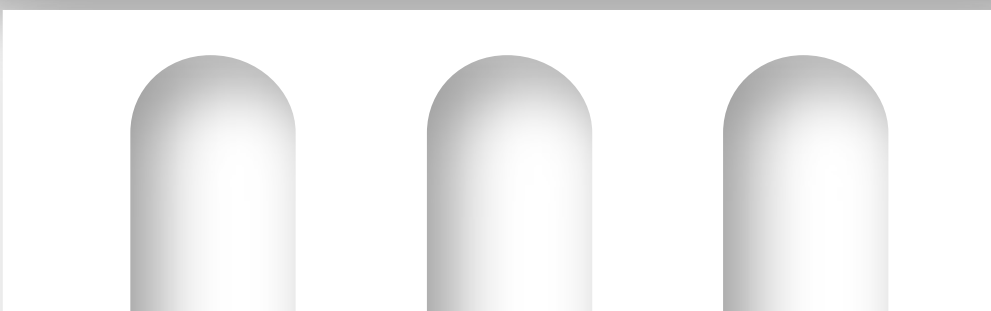


Fira Barcelona

MONTJUÏC VENUE





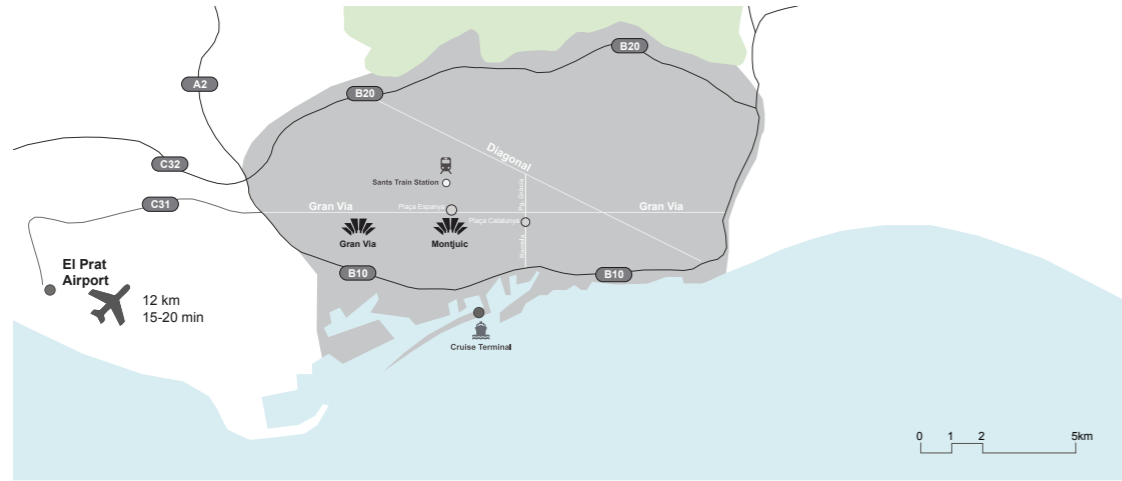
MONTJUÏC VENUE

Located in the centre of Barcelona, the exhibition centre occupies a total surface of 115,000 m² framed by the leafy setting of Montjuïc Park and presided over by the National Art Museum of Catalonia and the famous Magic Fountain.

The Montjuïc venue was built in 1929 to house the Barcelona International Exhibition. Now fully remodelled, it encompasses five large exhibition halls and a Conference Centre which, as a whole, represents a useable area of more than 86,000 m².

Equipped with the most modern infrastructures and services, the venue is ideal for holding all kinds of events. It is particularly suited for events involving huge numbers of visitors due to its privileged position offering easy, convenient access from anywhere in the city and surrounding areas. In addition to the meeting space at the Montjuïc exhibition centre there are a multitude of services and all the operational and logistic support you need for any kind of event.

HOW TO GET THERE



VENUE

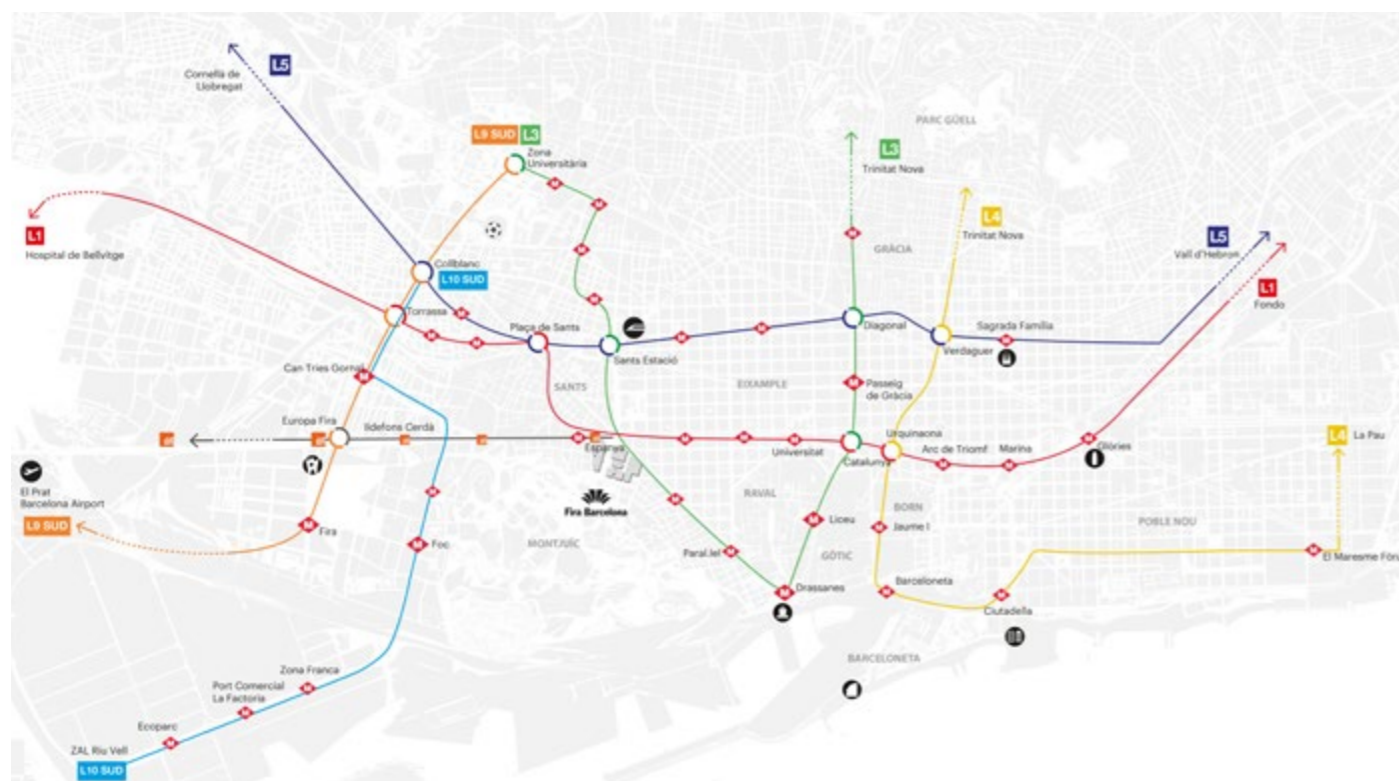
Located right in Barcelona's city center, Montjuïc Venue is ideally situated in an extremely vibrant area. The vast venue is conveniently linked by the local public transport network to both the metropolitan downtown and nearby El Prat International Airport (14 km).

AIRPORT

Barcelona Airport handles more than 874 flights per day to 191 destinations (46 intercontinental) and over 49.9 million passengers per year in 2023. Fira Montjuïc is accessible from the airport using the Metro Line 9, train and bus connections.

TRANSPORT

Plaça Espanya metro station and FGC Train station are the solution to reach Montjuïc venue by public transport from the city center and surroundings. Apart from private parking facilities there is also a taxi rank in front of the main access.



UNIQUENESS



Built in 1929 to house the Barcelona International Exhibition, the Fira Montjuïc venue has become a part of Barcelona's very identity. It is also a driver of economic, corporate and social progress that has promoted the city's heritage in Europe and abroad as an important trade-fair hub.

The site includes six pavilions and a conference centre that line up Avinguda de la Reina Maria Cristina, an avenue surrounded by landscaped gardens that leads up to the slopes of Mount Montjuïc. It ends at the Magical Fountain and the Palau Nacional (which today houses the National Art Museum of Catalonia, MNAC), both of which were also built for the 1929 International Exhibition.

The pavilions combine age-old tradition with state-of-the-art facilities and the infrastructure required for any event.



LOCATION

Located in Montjuïc Park besides Plaça d'Espanya, Fira's superb surroundings include expansive green zones, Olympic facilities and cultural landmarks such as the National Museum of Art of Catalunya (MNAC). You will find industrial-style spaces right at the heart of the city next to historical iconic settings such as the Magic Fountain of Montjuïc.



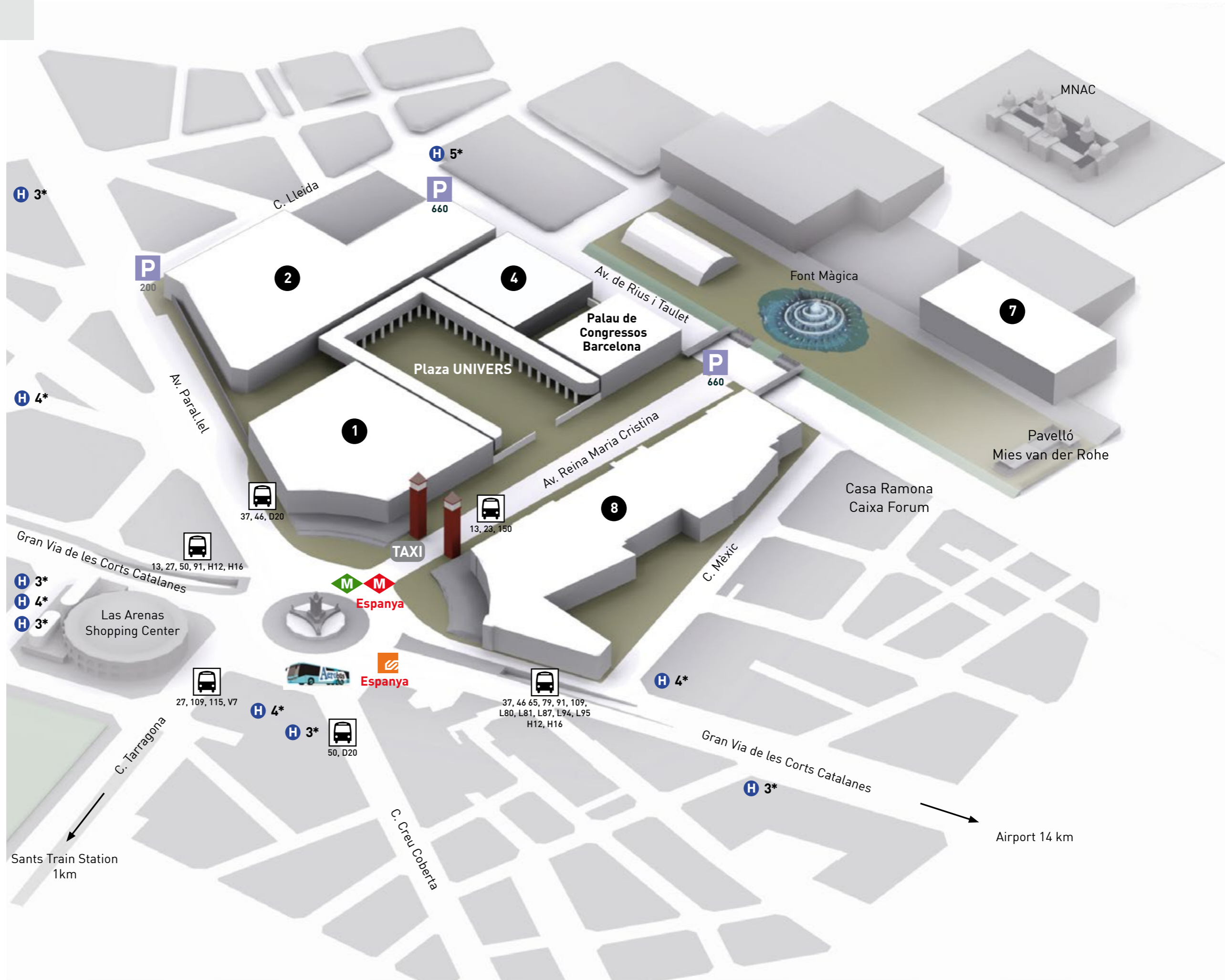
WIFI & INTERNET

All our facilities are equipped with the most advanced installations that deliver up to 10 Gb to anywhere in the venue with a permanent overall internet throughput of 40 Gbps. At the same time, a state-of-the-art network of wireless Access Point provides wifi6 802.11ax and wifi5 802.11ac coverage to every hall to fully satisfy the technology needs of every event organizer.



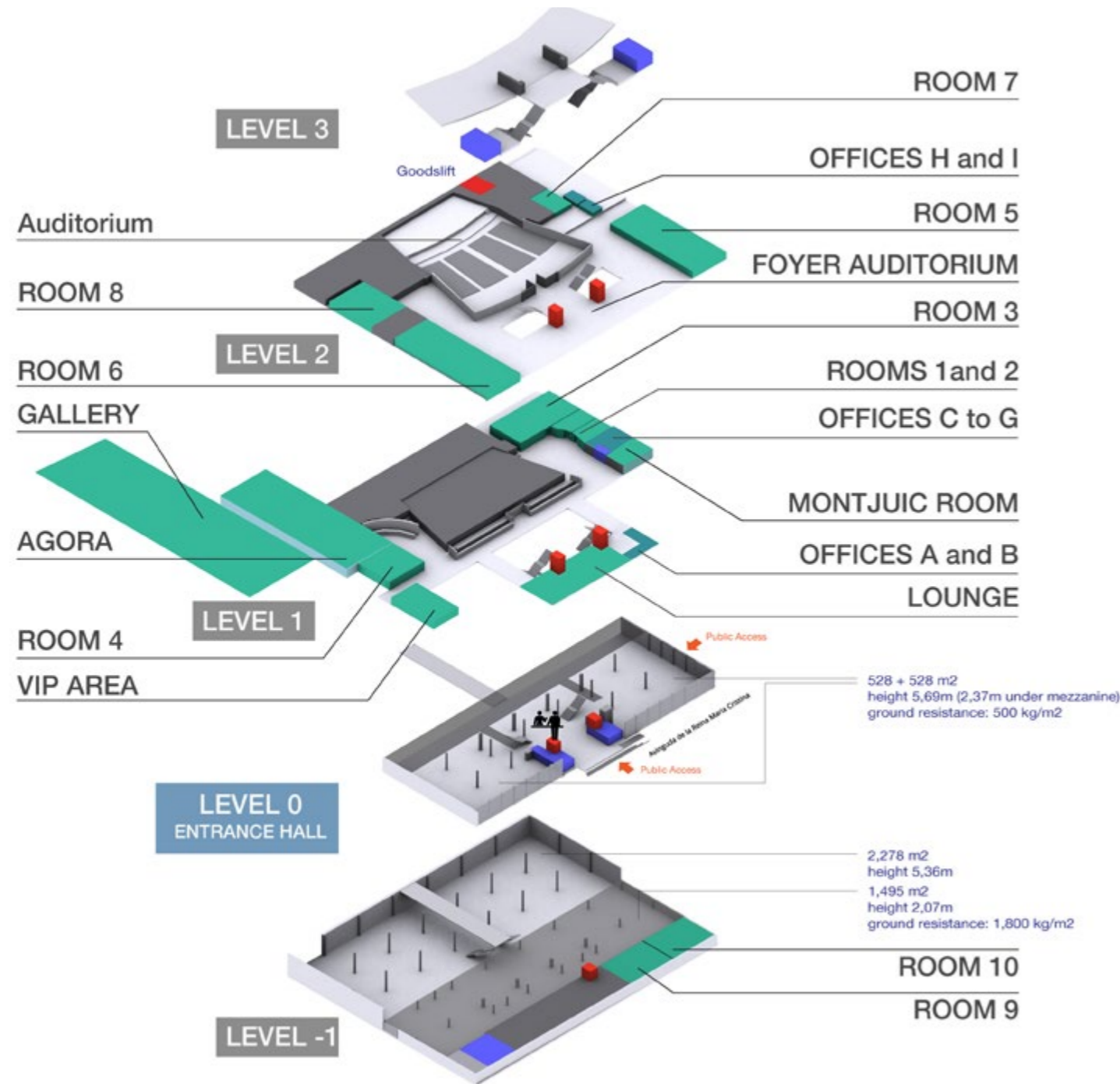
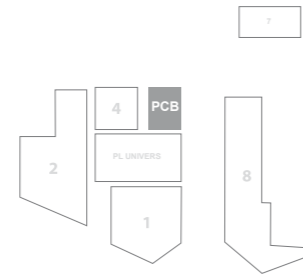
VENUE OVERVIEW

HALL	m ²
1	13,400
2	24,000
4	10,300
7	6,330
8	19,000
Plaza UNIVERS	16,700
Palau de Congressos Barcelona	5,500



PALAU CONGRESSOS BARCELONA

Rooms	11
Exhibition Area	5,600 m ²
Height	varies



	Theatre	School	U-Shape	Boardroom	Cabaret	Cocktail	Surface	Height	Length	Width
Auditorium	1,609	-	-	-	-	-	1,820m ²	-	-	-
Room 1	-	-	-	16	-	-	39m ²	3.3	8.9	4.9
Room 2	-	-	-	16	-	-	39m ²	3.3	7.8	4.9
Room 3	150	80	19	34	40	134	183m ²	3.4	18.8	9.6
Room 4	75	56	14	16	20	64	104m ²	3.7	10.7	9.7
Room 5	250	132	36	-	60	200	281m ²	3.5	26	10
Room 6	320	156	36	-	70	200	315m ²	3.4	30	10
Room 7	-	-	20	24	-	-	42m ²	3.4	7.7	5.3
Room 8	100	70	16	22	-	90	143m ²	2.4	13	10
Room 9	100	50	16	-	40	90	138m ²	2.5	14.1	9.4
Room 10	100	50	16	-	30	80	124m ²	2.4	12.7	9.4
Level -1	-	-	-	-	1,500	2,000	3,846m ²	5.5	78	49
Level 0	-	-	-	-	1,152	1,200	1,500m ²	5.7 & 2.37	76	30
VIP Room	200	-	-	-	100	215	350m ²	2.4	31	11
Montjuic Room	48	18	-	28	30	-	63m ²	2.3	10.9	5.8
Agora*	-	-	-	-	-	-	584m ²	3.7	39	14
Lounge	-	-	-	-	-	140	210m ²	2.3	25	9.8
Gallery*	-	-	-	-	-	-	1633m ²	3.6 - 5.4	156	10.5
Foyer Auditorium	-	-	-	-	-	450	860m ²	3.6 / 2.35	-	-
Office A	-	-	-	8	-	-	18m ²	2.3	-	-
Office B	-	-	-	8	-	-	28m ²	2.3	-	-
Office C	-	-	-	6	-	-	11m ²	2.3	-	-
Office D	-	-	-	6	-	-	11m ²	2.3	-	-
Office E	-	-	-	6	-	-	11m ²	2.3	-	-
Office F	-	-	-	10	-	-	15m ²	2.3	-	-
Office G	-	-	-	6	-	-	11m ²	2.3	-	-
Office H	-	-	-	4	-	-	16m ²	2.3	-	-
Office I	-	-	-	4	-	-	14m ²	2.3	-	-

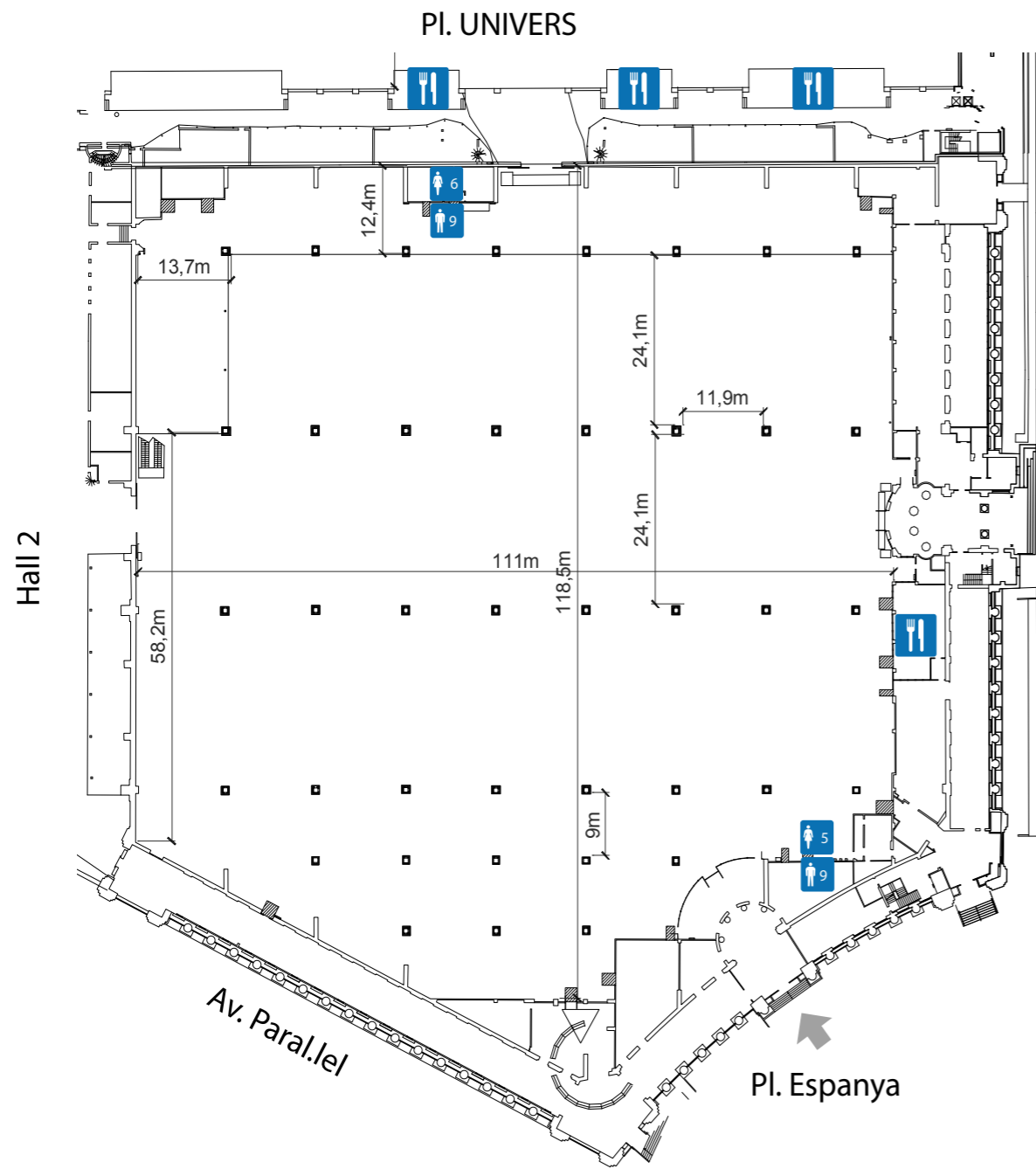
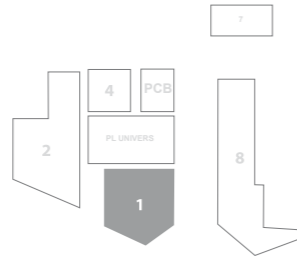
The default layout of the rooms is theatre style, except rooms 1, 2, 7, Montjuic room and all the offices. If you wish to have a different layout, please contact us.

* Capacities depend on the usage



HALL 1

Gross Surface	13,400 m ²
Ground Resistance	5,000 kg/m ²
Height	13.90 m



- WC
- Catering Outlet

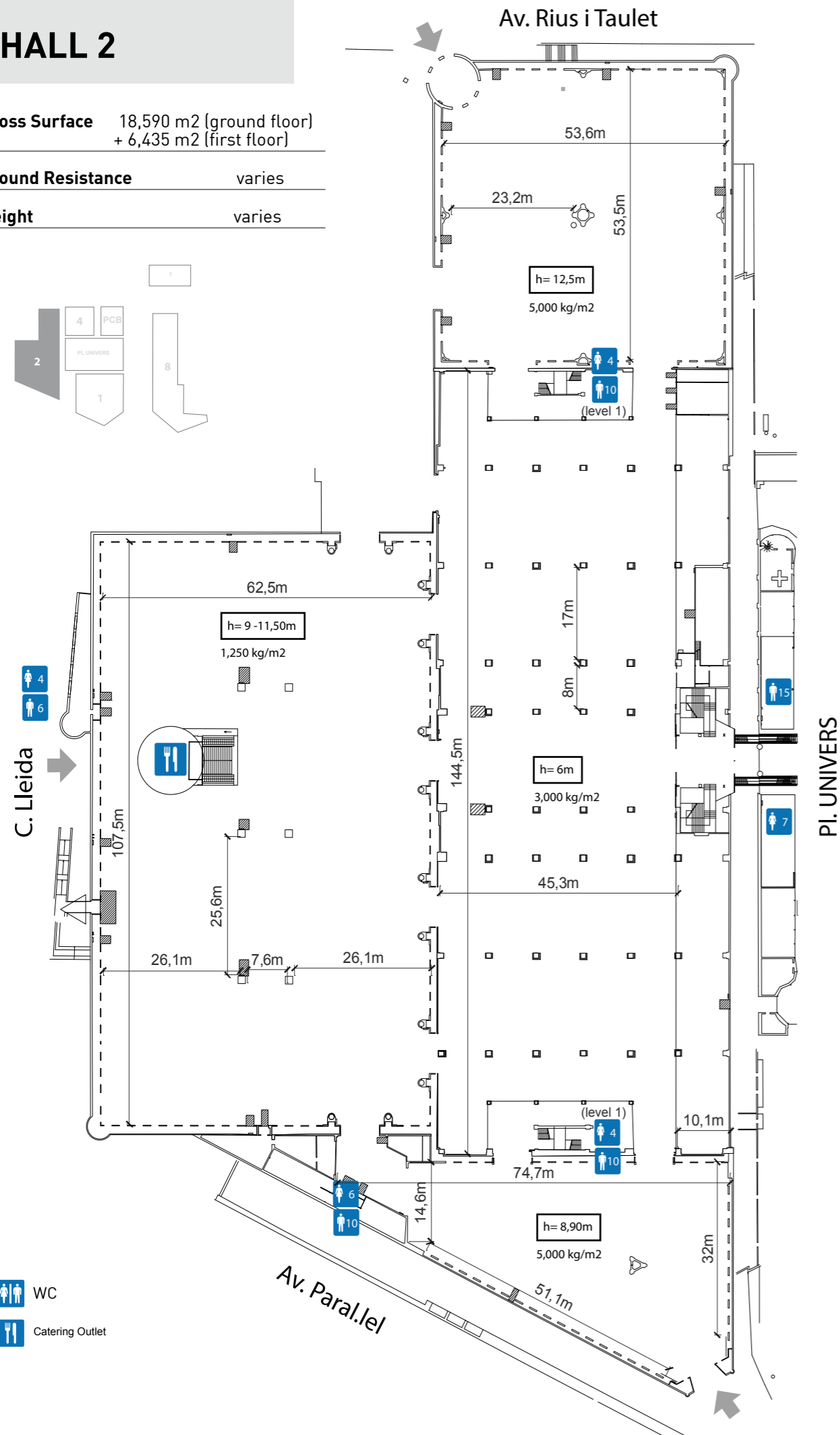
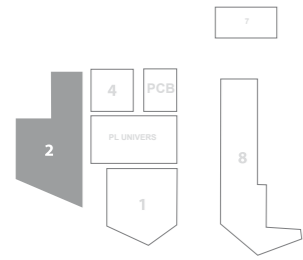


HALL 2

Gross Surface 18,590 m² (ground floor)
+ 6,435 m² (first floor)

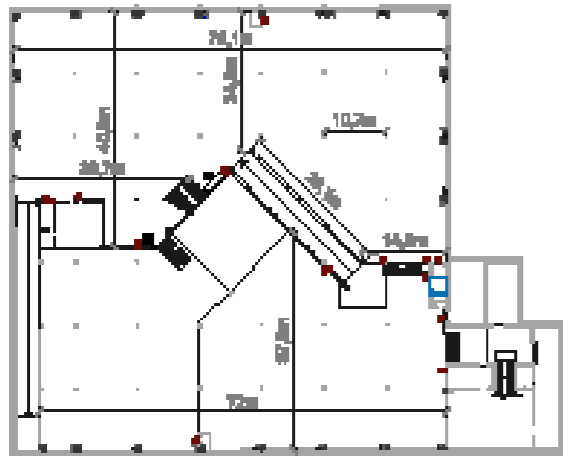
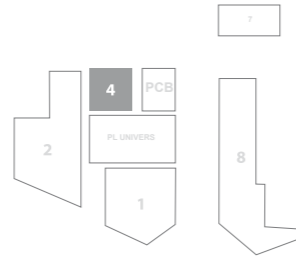
Ground Resistance varies

Height varies



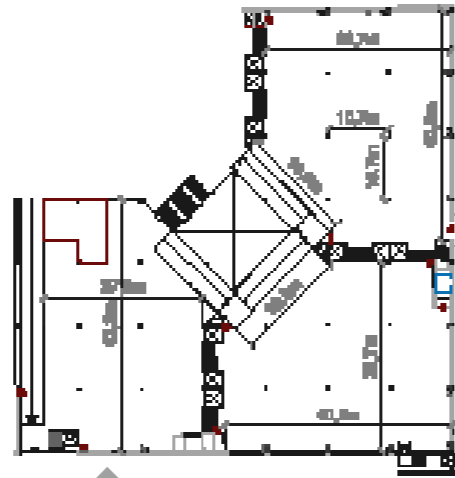
HALL 4

Gross Surface 10,300 m²
Ground Resistance varies
Height varies



LEVEL 0 and 1 (not available)

Total 5,000 m²

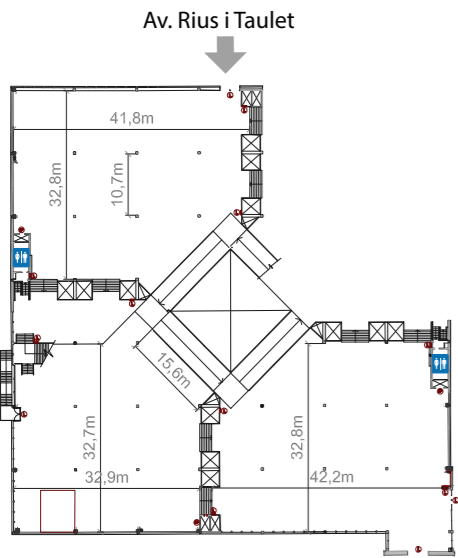


LEVEL 2, 3 and 4

Total 3,580 m²

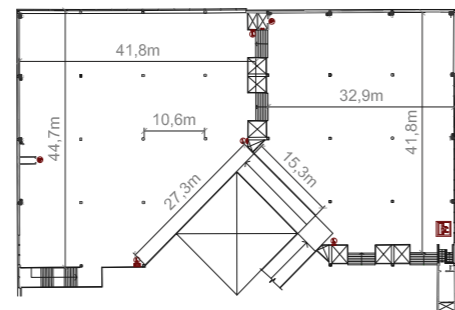
Palau de Congressos de Barcelona

↑ Pl. Univers



LEVEL 5, 6 and 7

Total 3,890 m²



LEVEL 8 and 9

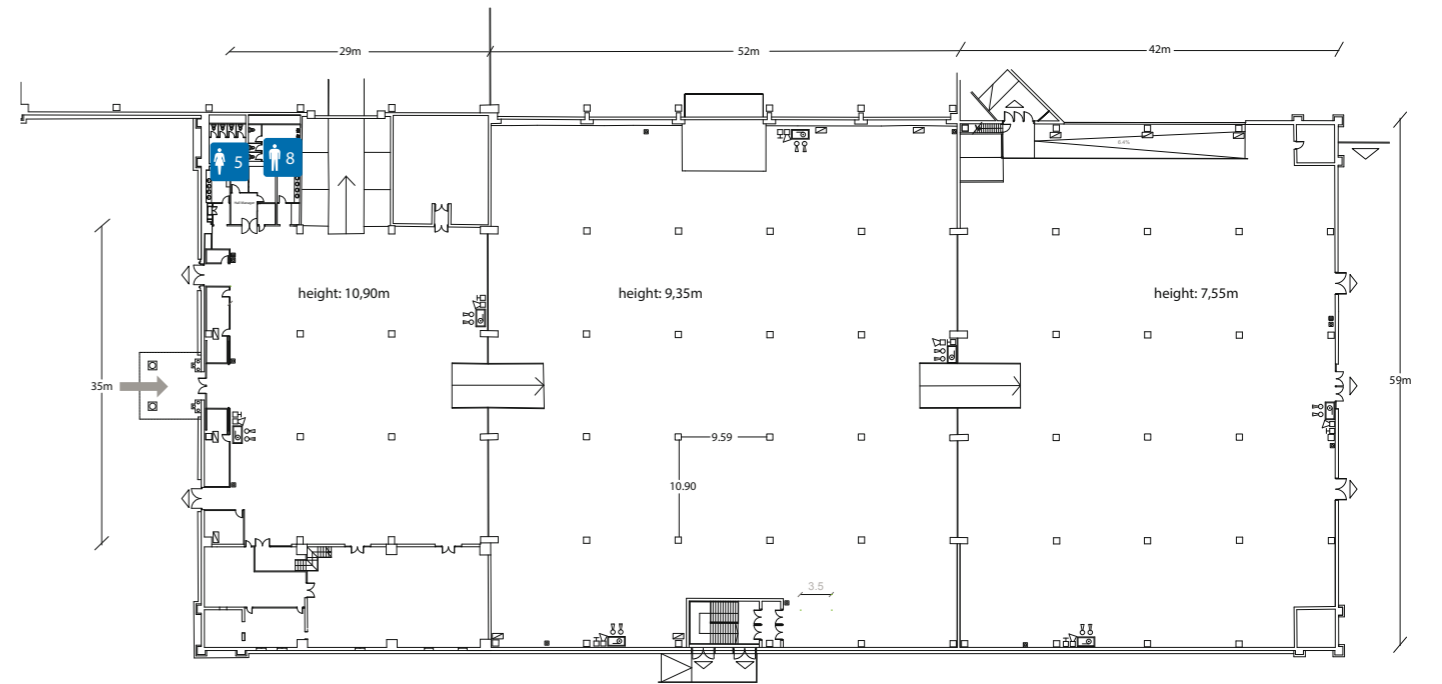
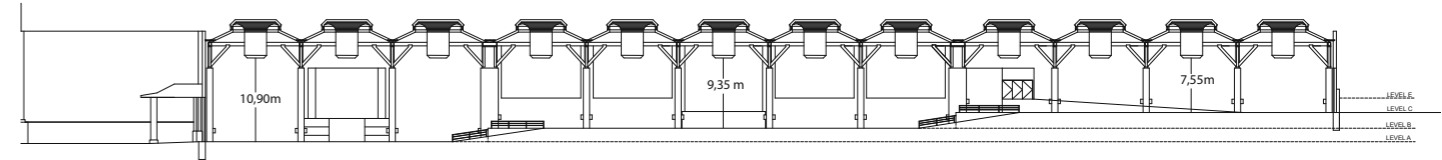
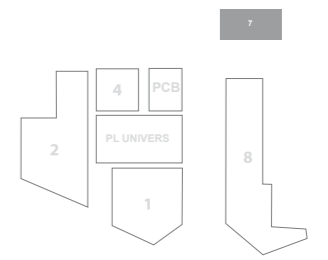
Total 2,850 m²

WC



HALL 7

Gross Surface 6,330 m²
Ground Resistance 3,000 kg/m²

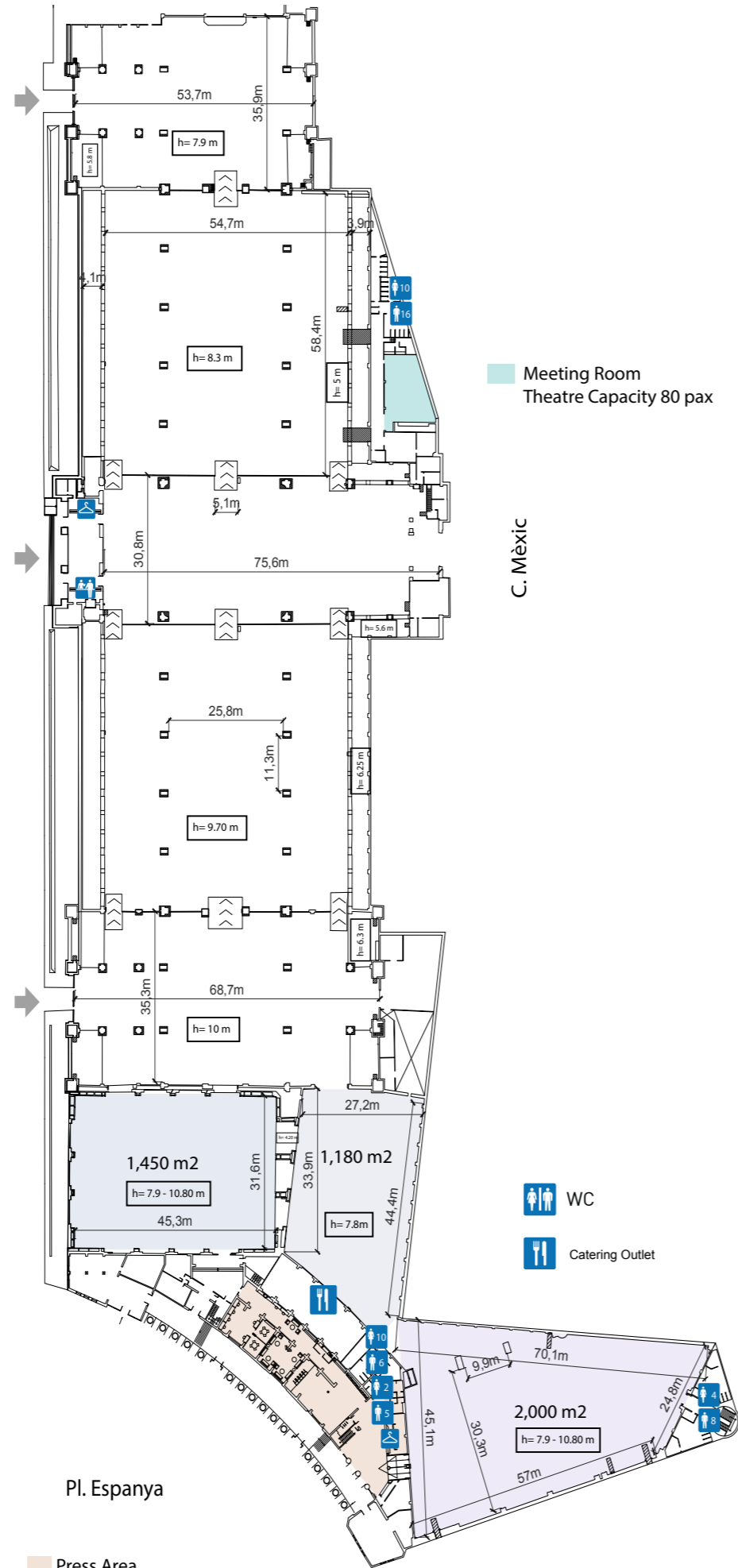
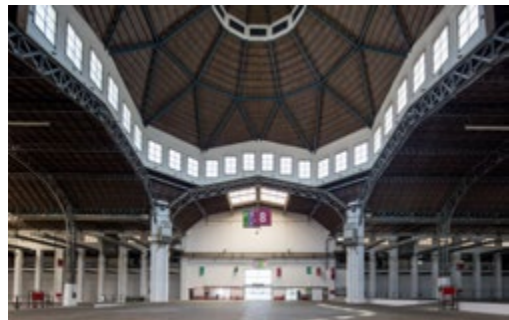
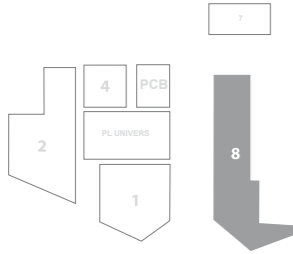


WC



HALL 8

Gross Surface	19,030 m ²
Ground Resistance	5,000 kg/m ²
Height	varies



Meeting Room
Theatre Capacity 80 pax

C. Mèxic

Pl. Espanya

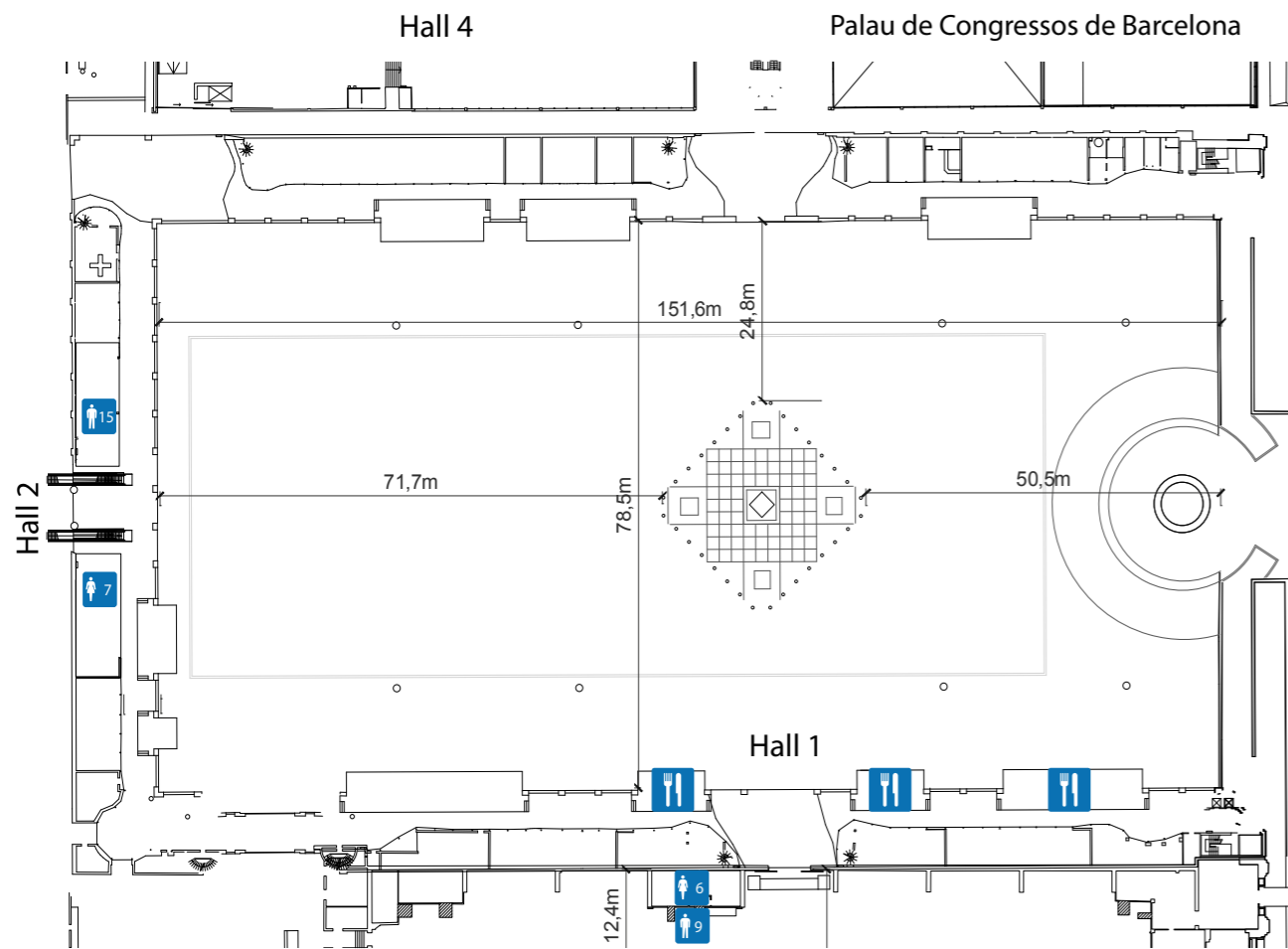
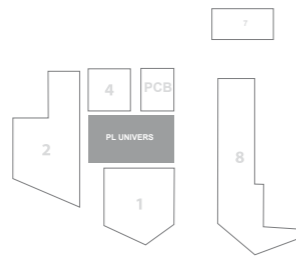
Press Area
Includes Working Offices, Cloakroom, WC
60 pax Conference Room



PLAZA UNIVERS

Gross Surface 18,590 m²

Ground Resistance 5,000 kg/m²



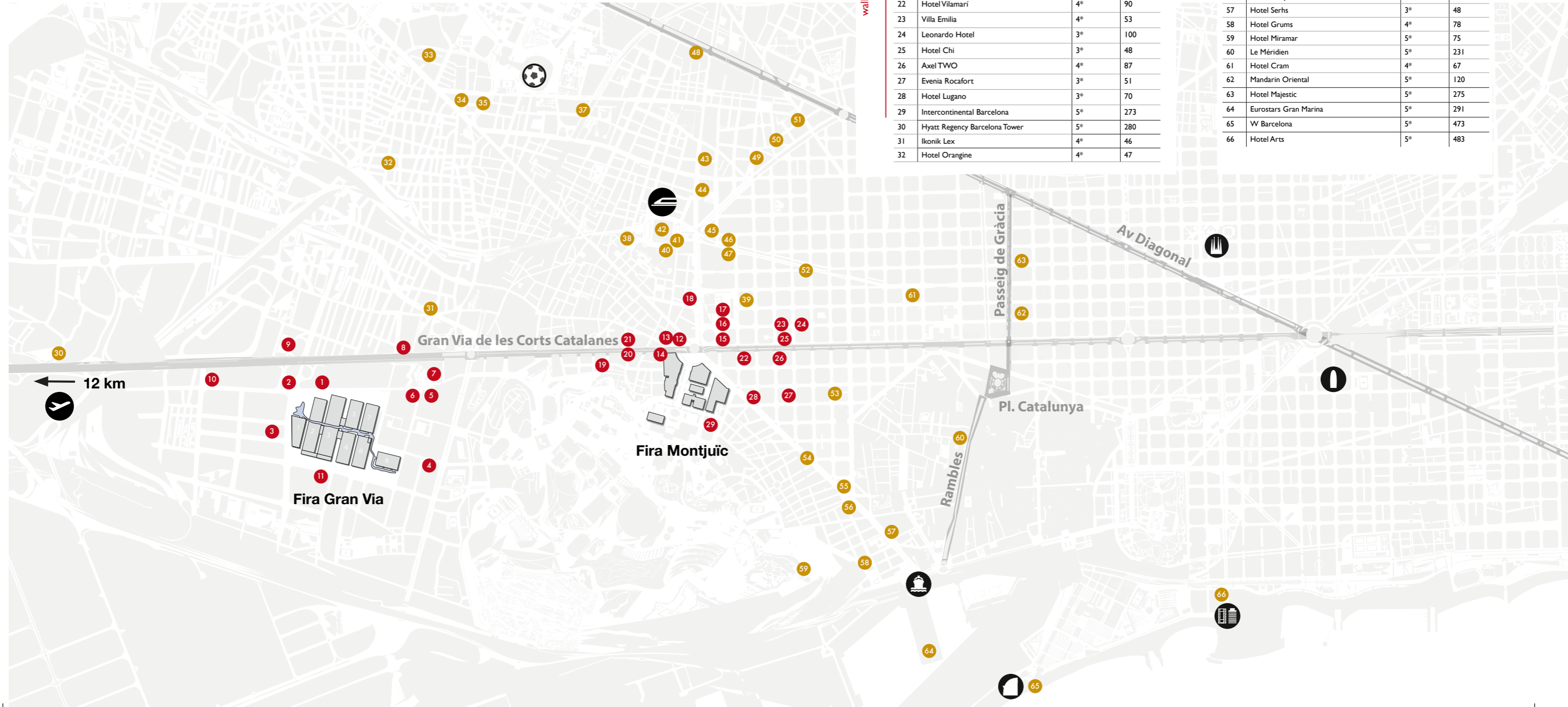
Av. Reina Maria Cristina

-  WC
-  Catering Outlet



HOTELS NEARBY

Barcelona offers more than 45,000 rooms in all categories. There are some 1.310 hotel rooms already built at walking distance from the venues, increasing to more than 5.000 rooms within a perimeter of 3km.



	Hotel Name	Category	Rooms
1	Hampton by Hilton	4*	241
2	Porta Fira	4*	311
3	Alexandre Hotel Fira Congress	4*	258
4	Leonardo Royal Hotel	4*	204
5	AC Som	4*	102
6	SB Plaza Europa	4*	243
7	Hotel Radha	3*	13
8	Easy Hotel	3*	204
9	Renaissance Barcelona Fira	4*	357
10	Eurohotel Gran Via Fira	4*	116
11	Travelodge L'Hospitalet	3*	83
12	Catalonia Plaza	4*	347
13	Hotel Occidental 1929	3*	152
14	Hotel Indigo Barcelona Gran Via	4*	189
15	B Hotel	3*	84
16	Hotel Ofelias	4*	44
17	Onix Fira	3*	80
18	Pestana Arena Barcelona	4*	84
19	Bcn Montjuïc	3*	63
20	Hotel Brick	1*	35
21	Acta Azul	3*	31
22	Hotel Vilamari	4*	90
23	Villa Emilia	4*	53
24	Leonardo Hotel	3*	100
25	Hotel Chi	3*	48
26	Axel TWO	4*	87
27	Evenia Rocafort	3*	51
28	Hotel Lugano	3*	70
29	Intercontinental Barcelona	5*	273
30	Hyatt Regency Barcelona Tower	5*	280
31	Ikonik Lex	4*	46
32	Hotel Orangine	4*	47

	Hotel Name	Category	Rooms
33	Hotel Ilunion Les Corts	4*	213
34	Hotel Madanis Liceo	3*	24
35	Hotel Madanis	4*	30
36	Torre Melina Meliá	5*	391
37	Hotel NH Barcelona Stadium	4*	106
38	AC Hotel Sants	4*	78
39	Chic & Basic Velvet	3*	50
40	Hotel Expo	4*	423
41	Nobu	5*	259
42	Hotel Barceló Sants	4*	378
43	Hotel NH Sants	4*	203
44	Abba Sants Hotel	4*	140
45	Via Sants by Hilton	4*	50
46	Hotel Abbot	4*	42
47	Hotel Catalonia Roma	3*	49
48	Hotel Hilton Barcelona	4*	290
49	Hotel NH Entenza	3*	48
50	Hotel Derby	4*	117
51	Hotel Meliá Barcelona Sarriá	5*	321
52	Hotel Viladomat	3*	81
53	Hotel Market	3*	46
54	Hotel Concordia Barcelona	4*	88
55	Hotel Barcelona Universal	4*	167
56	INNSide by Meliá	4*	314
57	Hotel Serhs	3*	48
58	Hotel Grums	4*	78
59	Hotel Miramar	5*	75
60	Le Méridien	5*	231
61	Hotel Cram	4*	67
62	Mandarin Oriental	5*	120
63	Hotel Majestic	5*	275
64	Eurostars Gran Marina	5*	291
65	W Barcelona	5*	473
66	Hotel Arts	5*	483

SERVICES

Fira Barcelona is proud to present the official services supplied by the venue together with our skilful partners. Along with its state-of-the-art venue and team, Fira Barcelona has a large and outstanding experience with organisers and exhibitors services. We have established partnerships with a wide range of suppliers with long, proved and strong international experience. They can be as varied as audiovisuals, stand building, feature areas, streaming, security and any other possible service you might require.

All the official suppliers work in complete synchrony with Fira Barcelona, who coordinates and monitors their services. The know-how on the venue logistics and the close relationship with the operations team (sitting near the organiser's office during build up, event and dismantling) give us a strategical advantage in delivering the best service.



DESIGN STANDS

CUSTOM-BUILT STAND: THE IDEAL FRAMEWORK FOR DOING BUSINESS

A new concept of stand construction and trade fair attendance management with the extensive experience and prestige of Fira Barcelona. We offer a comprehensive turnkey service to ensure your participation in the show is a success and take care of everything: from stand design and construction through to any other service you may need: audiovisual equipment, catering, hostesses, rigging, etc. www.buildupfira.com



FIRA STORE

A CUSTOMIZED E-COMMERCE WEBPAGE THAT ALLOWS YOU TO SELL EVEN MORE

At ServiFira, Fira's Exhibitor Service Department, we take care of everything to make sure your involvement in the event is a complete success. In doing so, we offer you the most comprehensive and innovative catalogue of exhibitor services on the market. If your exhibitor needs furniture, plants, internet connections or staff, among others, these can be easily ordered through an e-commerce webpage adapted to your needs. www.servifira.com



CATERING SERVICES

A WORLD OF MOUTHWATERING EXPERIENCES

We have put together a talented team from across the food industry to deliver the level of excellence our clients expect and deserve. Our young, innovative and dynamic team of professionals implements a specific strategy for the planning and management of catering services. We adapt to your needs regardless of the size or duration of the event. Mediterranean or International cuisine can be delivered at any space inside Fira and also at other emblematic spaces of the city. www.gastrofira.com



AV SOLUTIONS

POWERFUL PARTNERS TO BOOST YOUR EVENT WITH ALL RANGE OF AV EQUIPMENT

Our main objective is to offer a comprehensive service with the highest quality. Our services range from design and planning to the technical production and final execution of the project, supplying technical professional video equipment, computers, sound, lighting and translation. Our suppliers are able to deliver the best products available in the market with constant research of the latest releases.



OTHER SERVICES

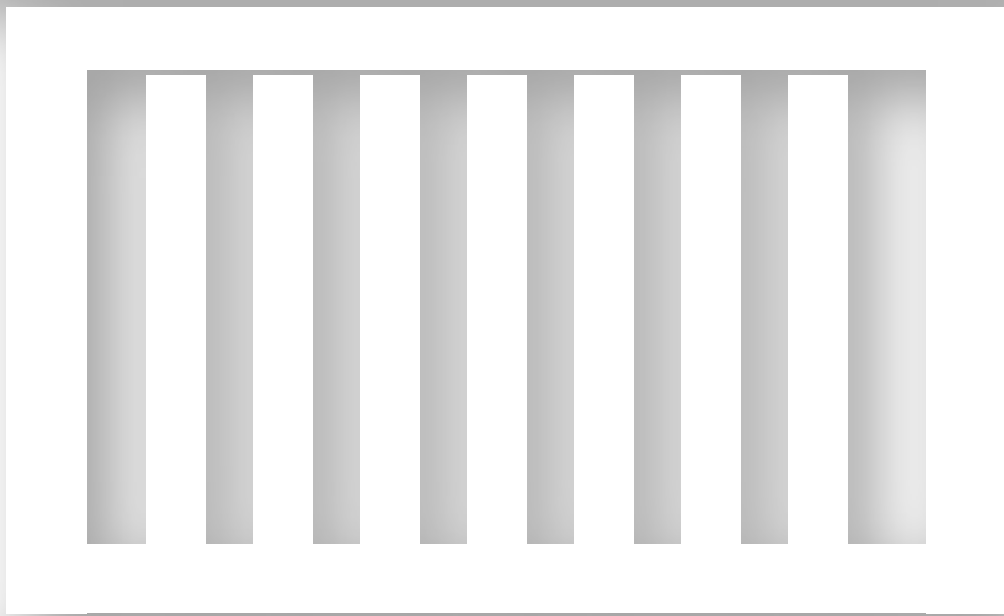
ANYTHING YOU NEED

We can also offer event-related services such as carpet, rigging services, signage and advertising, design companies for feature areas, shell scheme stands and also support staff as hostesses, security and cleaning. Fira Barcelona boasts a series of highly-qualified teams to cover every possible requirement of an event. From the ICT or Catering to Exhibitor Services Department, Fira Barcelona puts everything in gear to ensure the success of every event.



www.firabarcelona-guestevents.com

June 2024



Fira Barcelona

guestevents@firabarcelona.com

www.firabarcelona-guestevents.com

+34 93 233 20 00

