

Fira Barcelona

**PALAU DE CONGRESSOS  
DE BARCELONA**





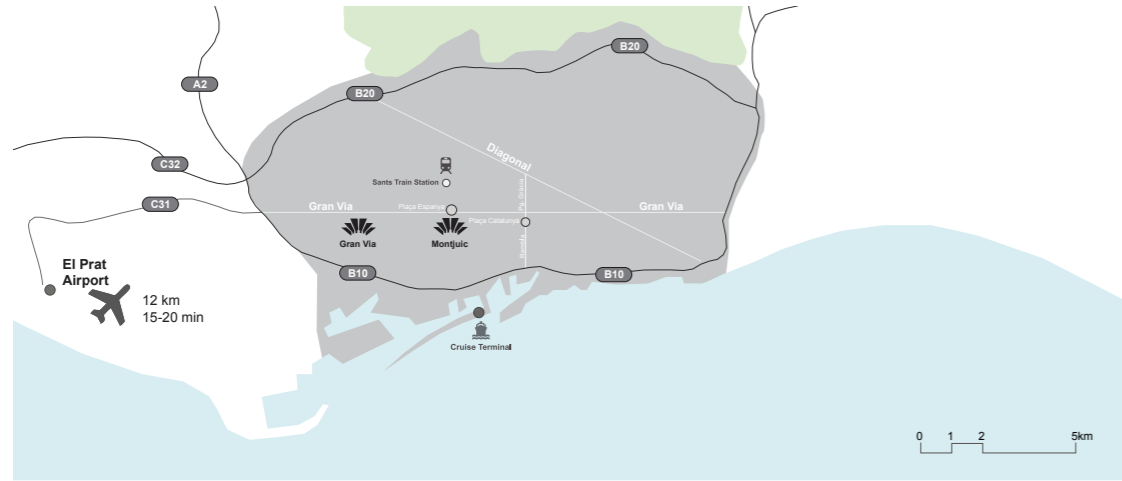
## PALACIO DE CONGRESOS DE BARCELONA

The Barcelona Congress Centre has positioned itself as the preferred venue of international firms and organizations looking for a large, versatile and central space in which to hold their events in the Catalan Capital. The 1,609-seat auditorium, 5,600 sqm of multipurpose space, 10 break-out rooms and an impressive terrace with stunning views over the Magic Fountains of Montjuïc and their legendary show of water, light and music are the most distinguishing features of this historical venue. The original building was created for Barcelona's International Exhibition in 1929 and housed the Projection Palace. In the 1960s it was converted into the Palace of Nations and in the 1990s it was remodelled to create the Congress Centre.

In 1992 it served as the Press Centre for the Barcelona Olympic Games and replaced the main Opera Hall of Barcelona during its refurbishment. One of its most highly-rated features is its position which, apart from being central, is next to one of the most enchanting sights of the city – the Montjuïc Magic Fountain – as well as being surrounded by some of the city's most iconic buildings such as the National Palace, the Alfonso XIII and Victoria Eugenia Palaces, the Mies van der Rohe Pavilion, Casa Ramona, Poble Espanyol and Las Arenas shopping mall.



## HOW TO GET THERE



## VENUE

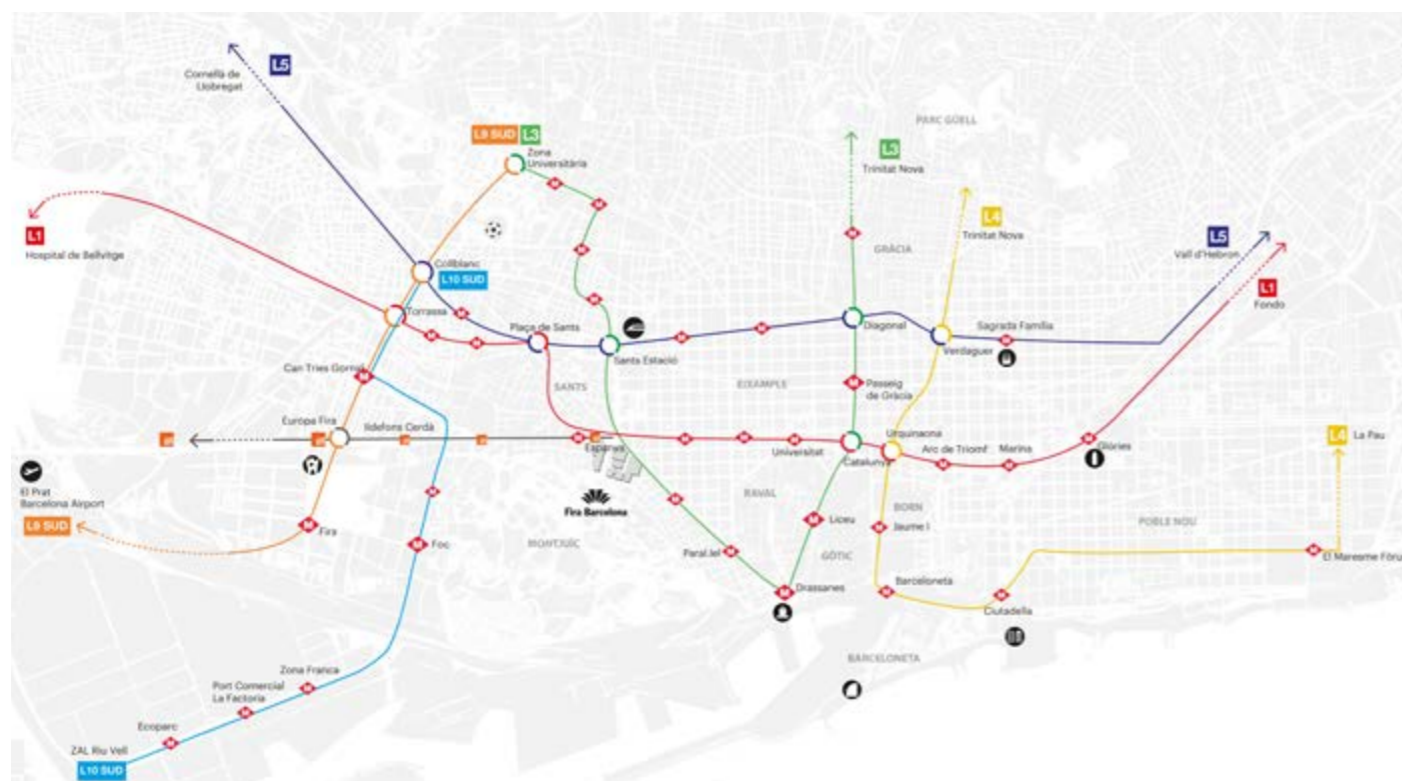
Located right in Barcelona's city center, Montjuïc Venue is ideally situated in an extremely vibrant area. The vast venue is conveniently linked by the local public transport network to both the metropolitan downtown and nearby El Prat International Airport (14 km).

## AIRPORT

Barcelona Airport handles more than 940 flights per day to 141 destinations (30 intercontinental) and over 52 million passengers per year in 2019. Fira Montjuïc is accessible from the airport using the new Metro Line 9, train and bus connections.

## TRANSPORT

Plaça Espanya metro station and FGC Train station are the solution to reach Montjuïc venue by public transport from the city center and surroundings. Apart from private parking facilities there is also a taxi rank in front of the main access.



## UNIQUENESS



Built in 1929 to house the Barcelona International Exhibition, the Fira Montjuïc venue has become a part of Barcelona's very identity. It is also a driver of economic, corporate and social progress that has promoted the city's heritage in Europe and abroad as an important trade-fair hub.

The site includes six pavilions and a conference centre that line up Avinguda de la Reina Maria Cristina, an avenue surrounded by landscaped gardens that leads up to the slopes of Mount Montjuïc. It ends at the Magical Fountain and the Palau Nacional (which today houses the National Art Museum of Catalonia, MNAC), both of which were also built for the 1929 International Exhibition.

The pavilions combine age-old tradition with state-of-the-art facilities and the infrastructure required for any event.



## LOCATION

Located in Montjuïc Park besides Plaça d'Espanya, Fira's superb surroundings include expansive green zones, Olympic facilities and cultural landmarks such as the National Museum of Art of Catalunya (MNAC). You will find industrial-style spaces right at the heart of the city next to historical iconic settings such as the Magic Fountain of Montjuïc.



## WIFI & INTERNET

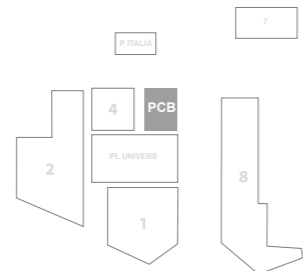
All our facilities are equipped with the most advanced installations that deliver up to 10 Gb to anywhere in the venue with a permanent overall internet throughput of 40 Gbps. At the same time, a state-of-the-art network of wireless Access Point provides wifi6 802.11ax and wifi5 802.11ac coverage to every hall to fully satisfy the technology needs of every event organizer.





# VENUE OVERVIEW

|                 |                      |
|-----------------|----------------------|
| Rooms           | 11                   |
| Exhibition Area | 5,600 m <sup>2</sup> |
| Height          | 11 m                 |



## Auditorium

563 pax

LEVEL 3

## Auditorium

total 1,609 pax/ 1,046 ground level

## ROOM 8

100 pax

LEVEL 2

## ROOM 6

320 pax

## ROOM 4

75 pax

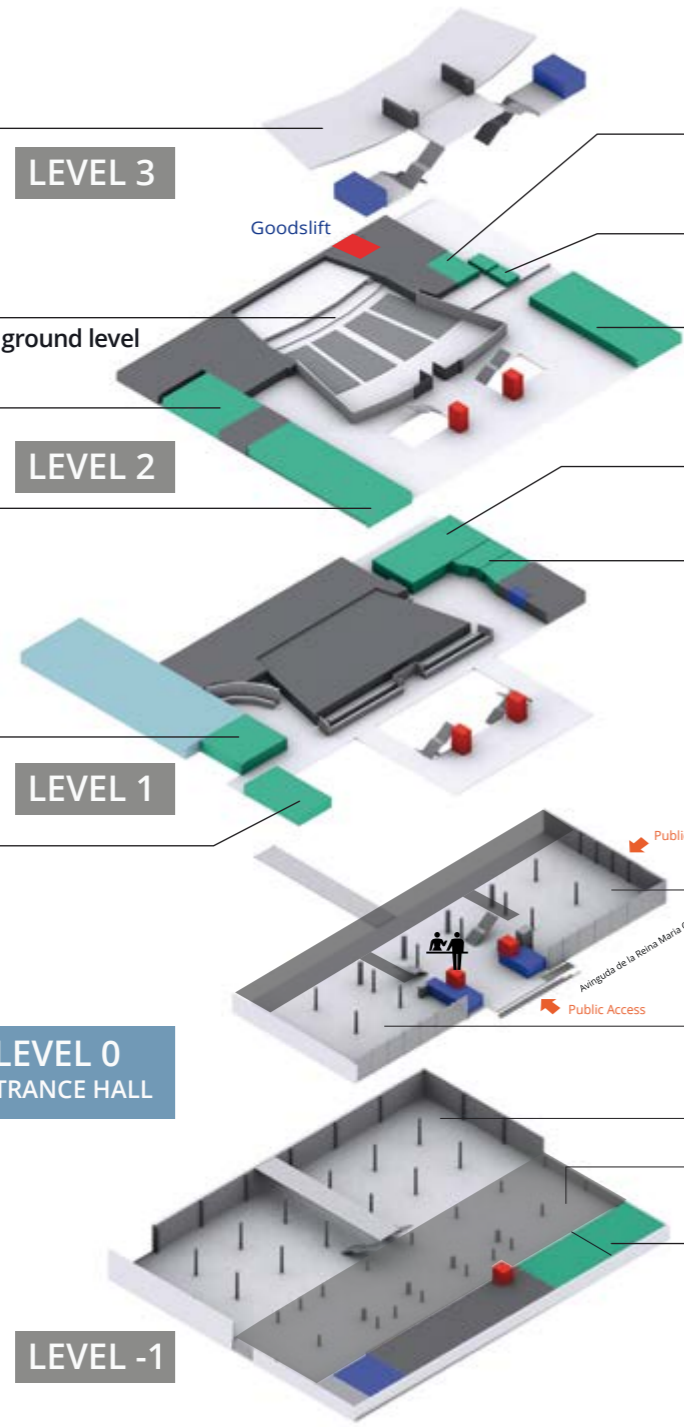
LEVEL 1

## VIP AREA

200 pax

LEVEL 0  
ENTRANCE HALL

LEVEL -1



## ROOM 7

20 pax

## OFFICES A and B

16 m<sup>2</sup> each

## ROOM 5

250 pax

## ROOM 3

150 pax

## ROOMS 1 and 2

16 pax each

528 + 528 m<sup>2</sup>  
height 5,69m (2,37m under mezzanin)  
ground resistance: 500 kg/m<sup>2</sup>

2,278 m<sup>2</sup>  
height 5,36m  
1,495 m<sup>2</sup>  
height 2,36m  
ground resistance: 1,800 kg/m<sup>2</sup>

## ROOMS 9 and 10

100 pax each

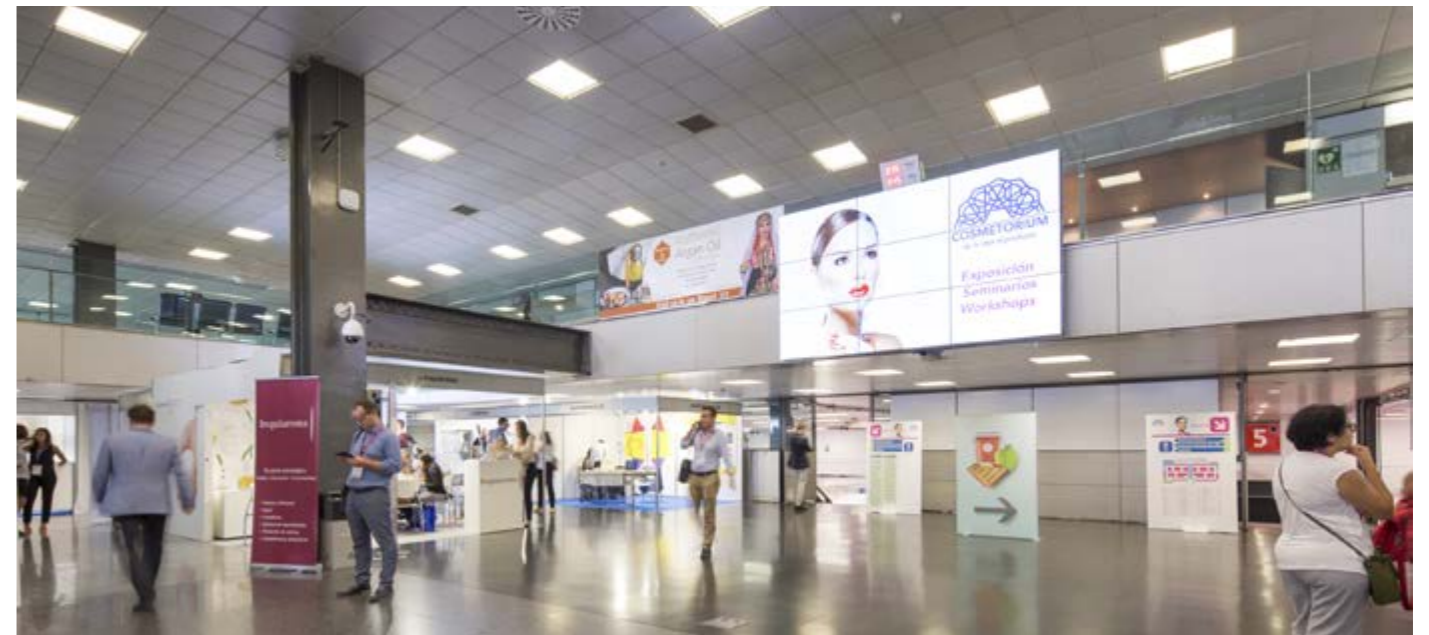
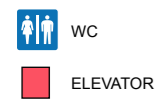
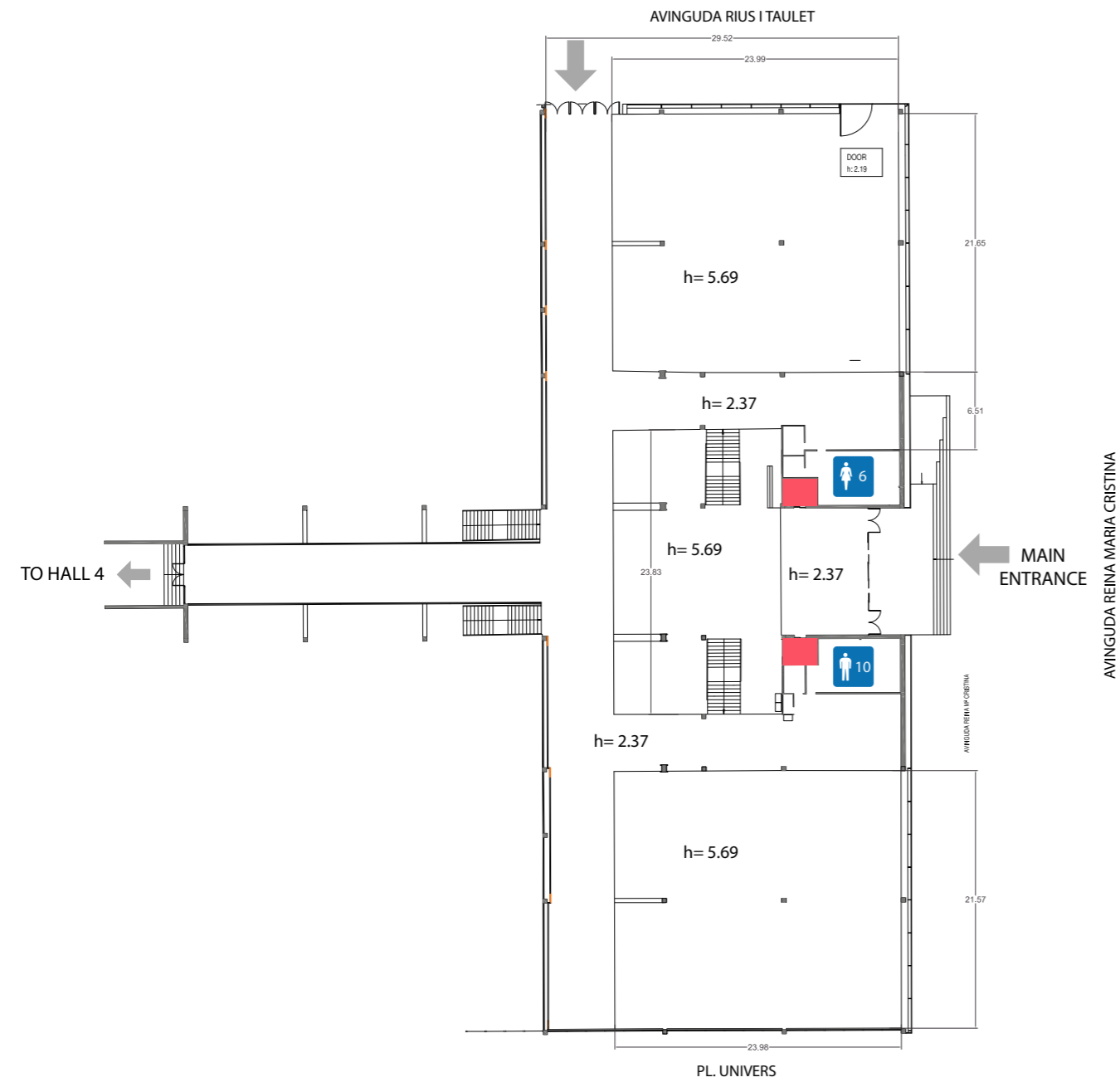
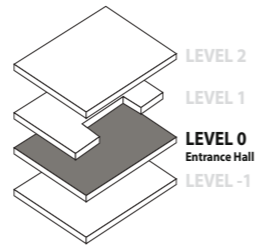




# EXHIBITION AREAS

## LEVEL 0 (ENTRANCE HALL)

Surface 1,020 m<sup>2</sup> (height 5,69m) and 680 m<sup>2</sup> (height 2,37m)





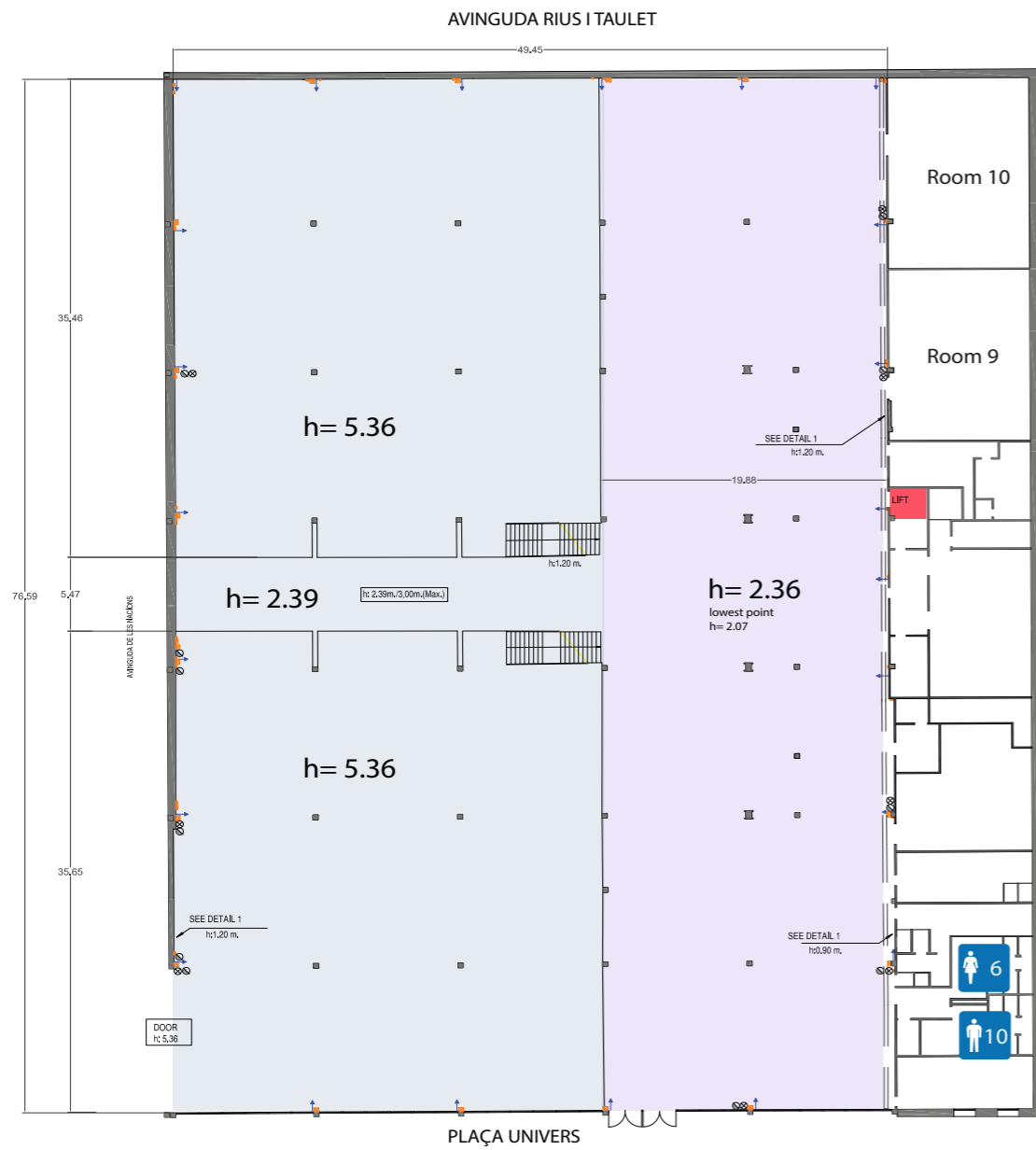
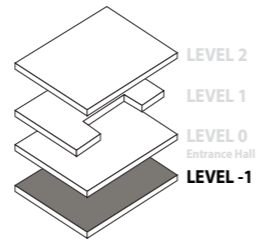
# EXHIBITION AREAS

## LEVEL -1

Total 3,500 m<sup>2</sup>

2,000 m<sup>2</sup> (height 5,57m)

1,500 m<sup>2</sup> (height 2,36m)









# PALAU DE CONGRESSOS DE BARCELONA AUDITORIUM

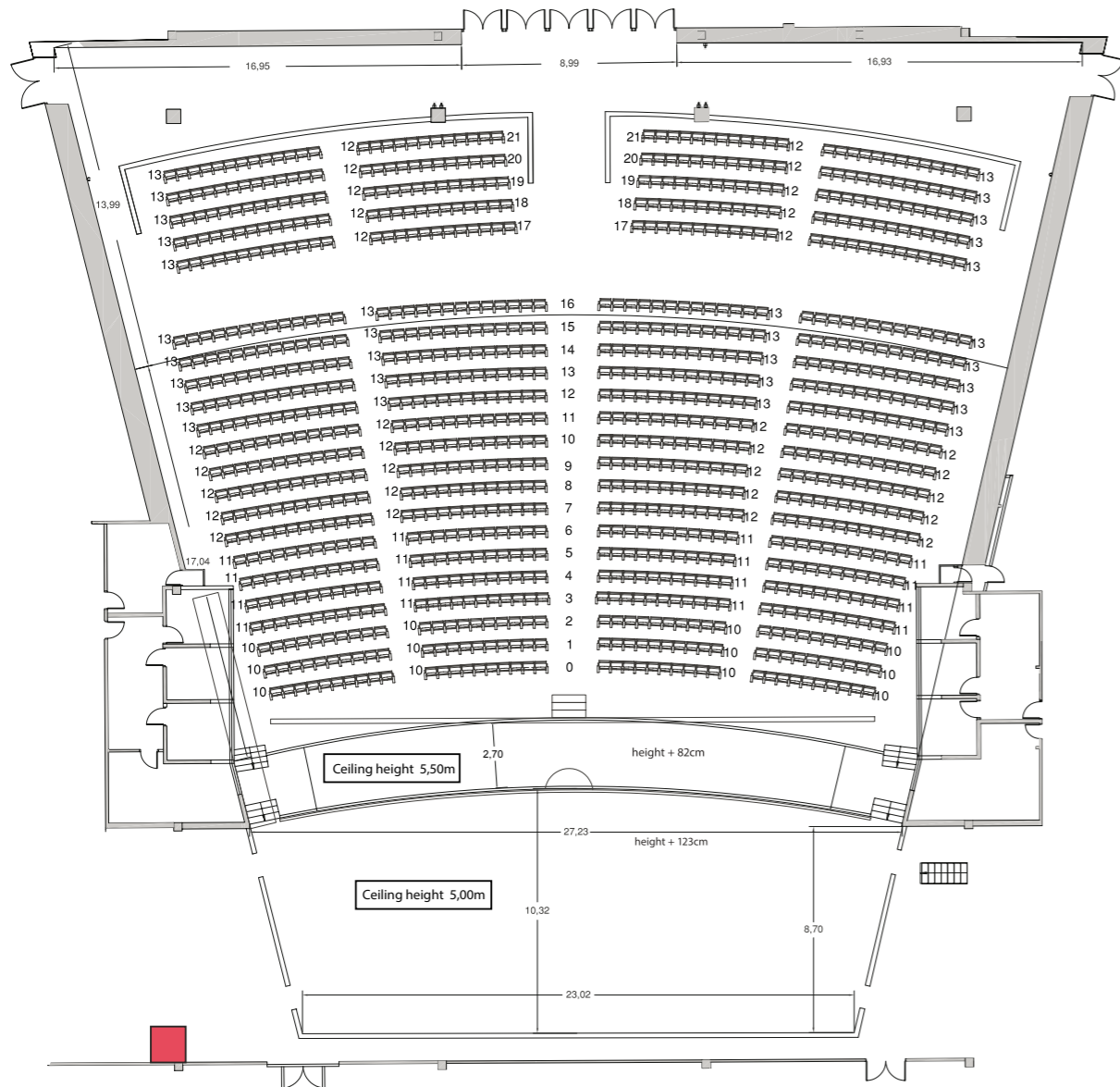
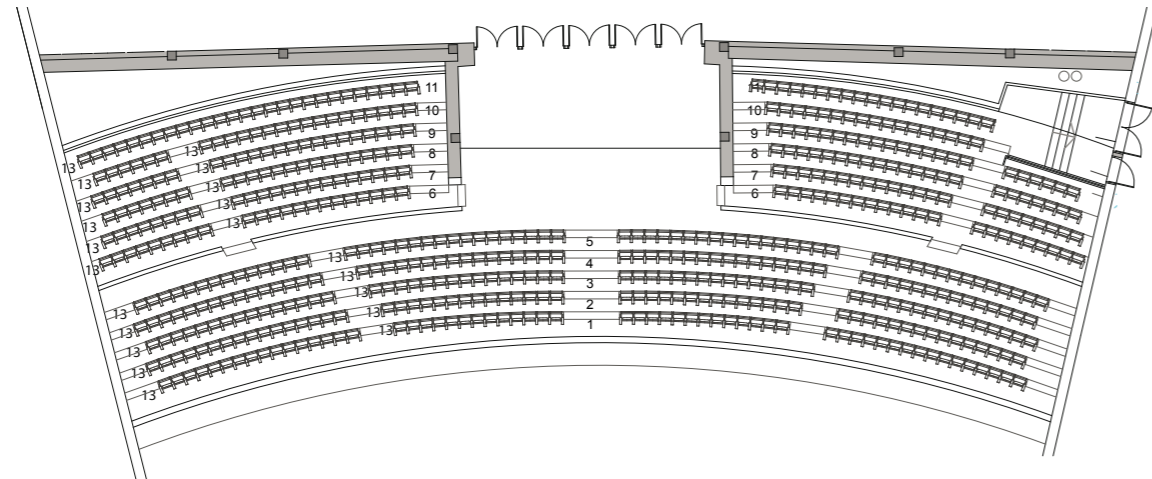
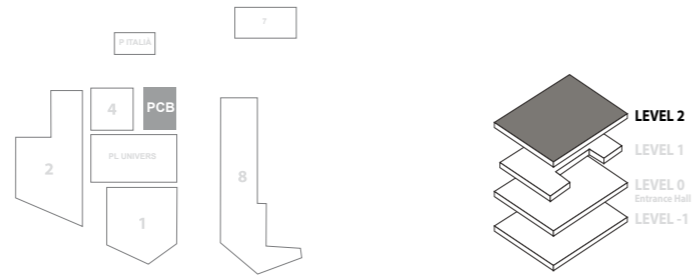
Capacity 1,609 pax

Lower level capacity: 1,046 pax

Upper level: 563 pax

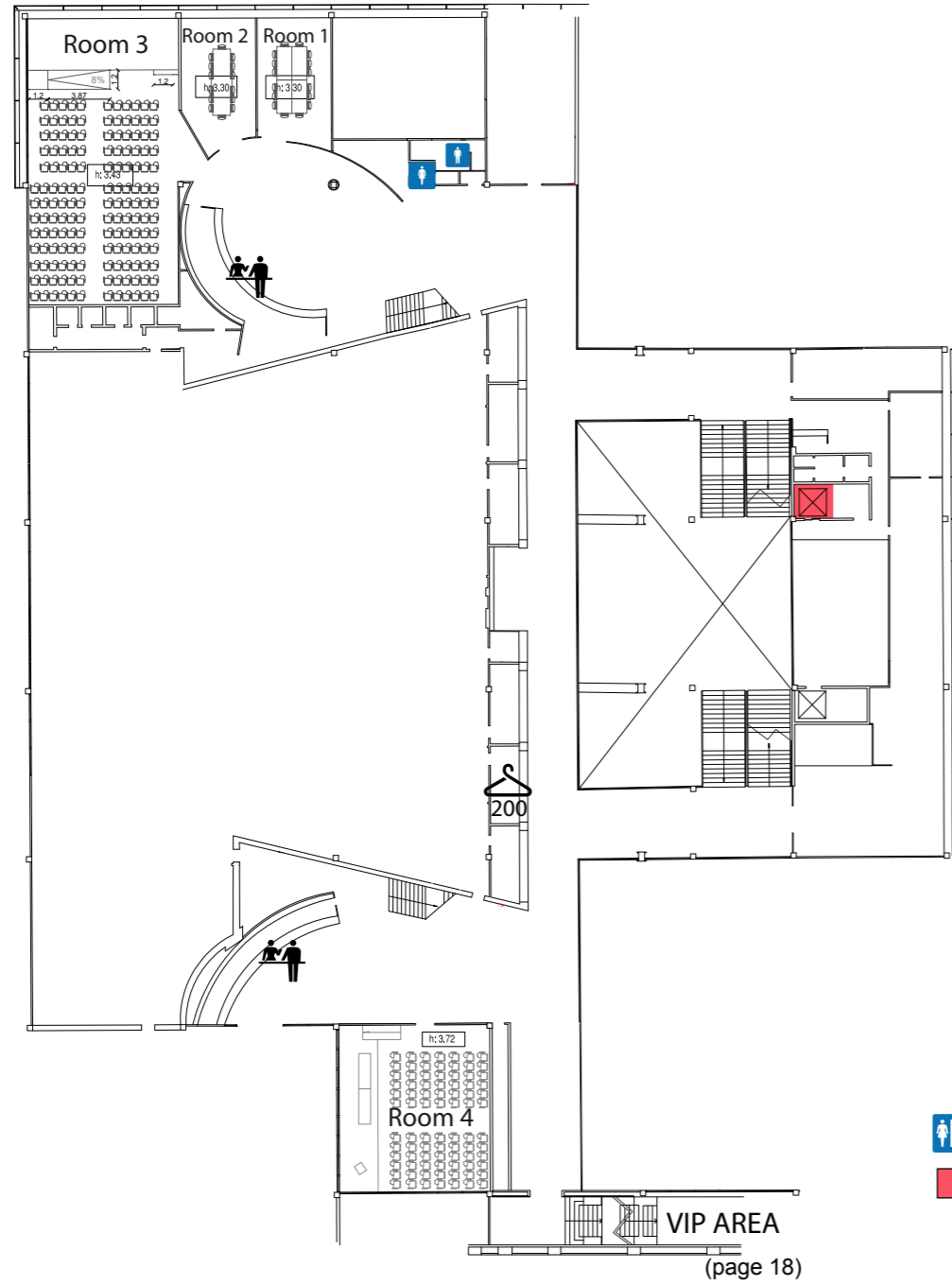
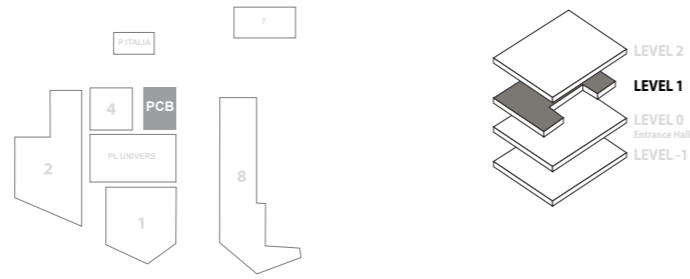


GOODSLIFT

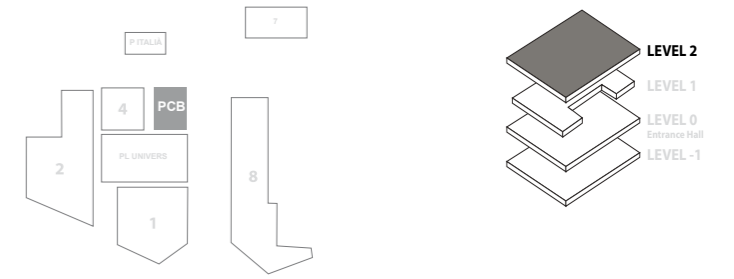




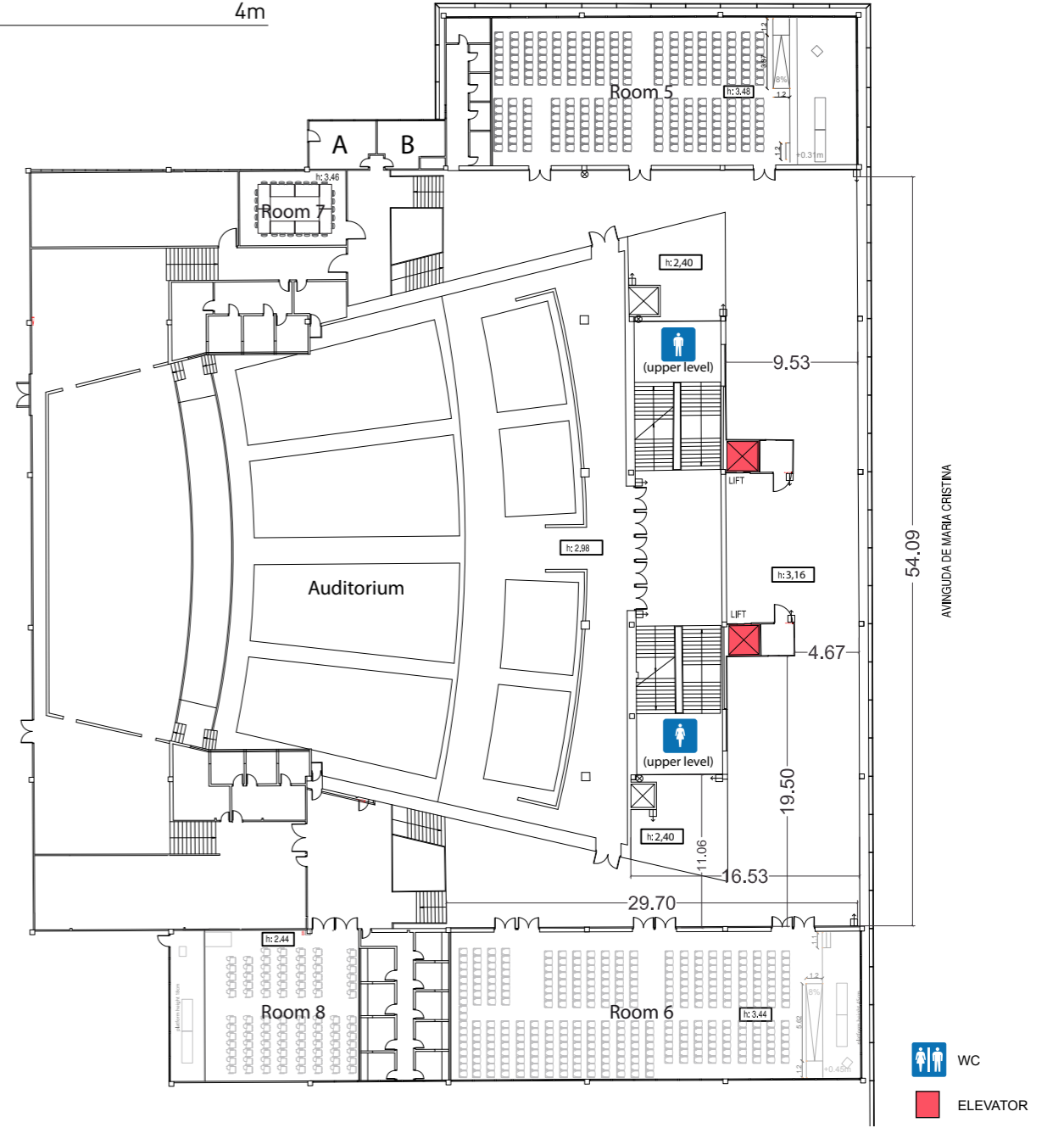
**PALAU DE CONGRESSOS DE BARCELONA  
LEVEL 1**



**PALAU DE CONGRESSOS DE BARCELONA  
LEVEL 2**

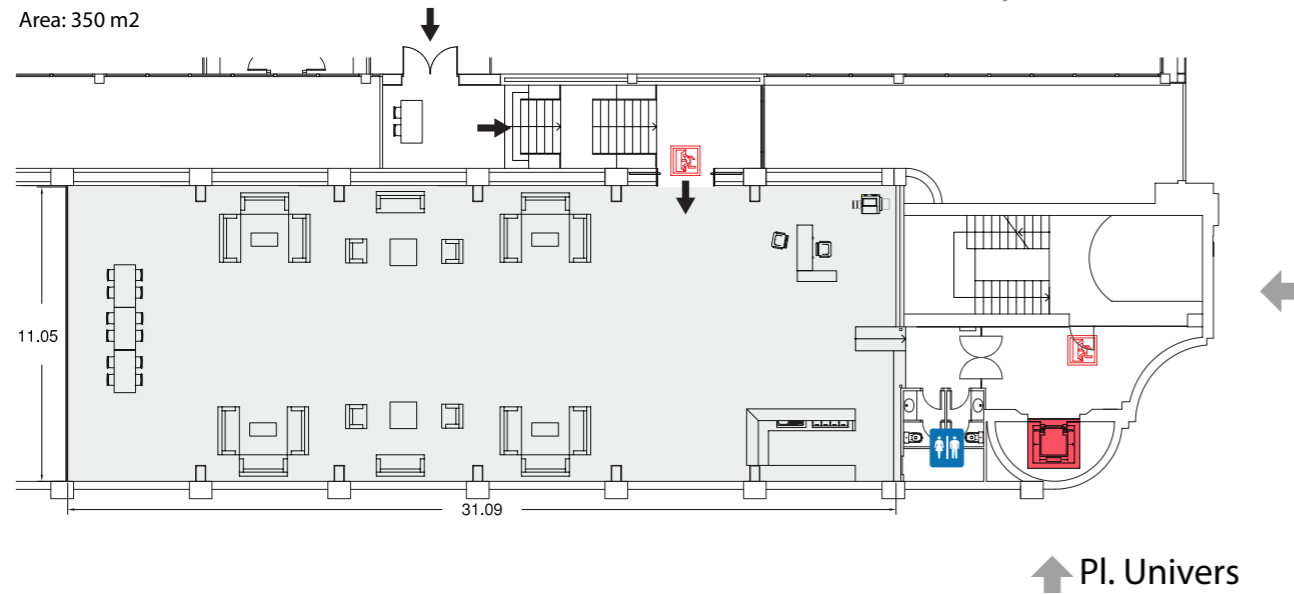
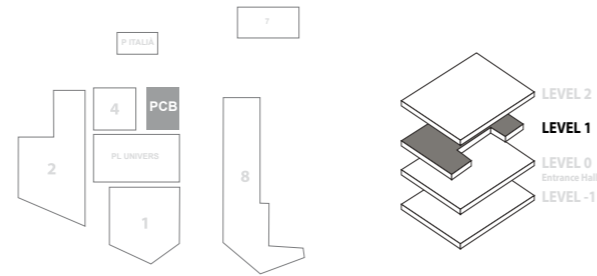


**Capacity Cocktail** 450 pax  
**Area** 600 m2  
**Height** 4m





**PALAU DE CONGRESSOS DE BARCELONA**  
**VIP AREA**



**PALAU DE CONGRESSOS DE BARCELONA**  
**CAPACITIES**

|                 | Theatre | School | U-Shape | Boardroom | Cabaret | Cocktail | Surface | Height     | Length | Width |
|-----------------|---------|--------|---------|-----------|---------|----------|---------|------------|--------|-------|
| Auditorium      | 1,609   | -      | -       | -         | -       | -        | 1,820m2 | -          | -      | -     |
| Room 1          | -       | -      | -       | 16        | -       | -        | 41m2    | 3.3        | 8.9    | 4.9   |
| Room 2          | -       | -      | -       | 16        | -       | -        | 40m2    | 3.3        | 7.8    | 4.9   |
| Room 3          | 150     | 80     | 19      | 34        | 40      | 134      | 183m2   | 3.4        | 18.8   | 9.6   |
| Room 4          | 75      | 56     | 14      | 16        | 20      | 64       | 104m2   | 3.7        | 10.7   | 9.7   |
| Room 5          | 250     | 132    | 36      | -         | 60      | 200      | 281m2   | 3.5        | 26     | 10    |
| Room 6          | 320     | 156    | 36      | -         | 70      | 200      | 315m2   | 3.4        | 30     | 10    |
| Room 7          | -       | -      | 20      | 24        | -       | -        | 42m2    | 3.4        | 7.7    | 5.3   |
| Room 8          | 100     | 70     | 16      | 22        | -       | 90       | 143m2   | 2.4        | 13     | 10    |
| Room 9          | 100     | 50     | 16      | -         | 40      | 90       | 138m2   | 2.5        | 14.1   | 9.4   |
| Room 10         | 100     | 50     | 16      | -         | 30      | 80       | 124m2   | 2.4        | 12.7   | 9.4   |
| VIP Room        | 200     | -      | -       | -         | 100     | 215      | 350m2   | 2.4        | 31     | 11    |
| Level -1        | -       | -      | -       | -         | 1,500   | 2,000    | 3,846m2 | 5.5        | 78     | 49    |
| Level 0         | -       | -      | -       | -         | 1,152   | 1,200    | 1,500m2 | 5.7 & 2.37 | 76     | 30    |
| Level 2 (foyer) | -       | -      | -       | -         | -       | 450      | 860m2   | 3.6 / 2.35 | -      | -     |

The default layout of the rooms is theatre style, except rooms 1 & 2.  
If you wish to have a different layout, please contact us.

For more information (AV packs, PDF and DWG floorplans, pictures and virtual tours of each room) please visit [www.firabarcelona-guestevents.com/en/montjuic/palau-congressos](http://www.firabarcelona-guestevents.com/en/montjuic/palau-congressos)





PALAU DE CONGRESSOS DE BARCELONA



## HOTELS NEARBY

Barcelona offers more than 45,000 rooms in all categories. There are some 1.310 hotel rooms already built at walking distance from the venue, increasing to more than 5.000 rooms within a perimeter of 3km.



|                  |                                  |     |                            |                             |     |     |
|------------------|----------------------------------|-----|----------------------------|-----------------------------|-----|-----|
| walking distance | 1. Catalonia Barcelona Plaza *4  | 347 | 5 min taxi                 | 18. H10 Itaca*4             | 9   | 5   |
|                  | 2. Hotel Occidental BCN 1929*3   | 152 |                            | 19. Viladomat*3             |     | 81  |
|                  | 3. B-Hotel*3                     | 84  |                            | 20. Soho*3                  |     | 57  |
|                  | 4. Ayre Hotel Gran Via*4         | 189 |                            | 21. Two by Axel*4           |     | 87  |
|                  | 5. Ofelias*4                     | 44  |                            | 22. Market*3                |     | 46  |
|                  | 6. Onix Fira*3                   | 45  |                            | 23. Barcelona Universal*4   |     | 167 |
|                  | 7. Azul*3                        | 31  | 24. Tryp Barcelona Apolo*4 |                             | 314 |     |
|                  | 8. Vilamari*4                    | 90  | 25. Miramar*5              |                             | 75  |     |
|                  | 9. Hotel Chi *3                  | 48  | 26. Silken Concordia*3     |                             | 79  |     |
|                  | 10. Intercontinental Barcelona*5 | 273 | 10 min taxi                | 27. Majestic*5              |     | 303 |
|                  | 11. HCC Lugano*3                 | 70  |                            | 28. Cram*4                  |     | 67  |
|                  | 12. Evenia Rocafort*3            | 51  |                            | 29. Mandarin Oriental*5     |     | 98  |
|                  | 13. Climent*1                    | 35  |                            | 30. Eurostars Gran Marina*5 |     | 291 |
| 5 min taxi       | 14. Gran Hotel Torre Catalunya*4 | 272 |                            | 31. W Barcelona*5           |     | 473 |
|                  | 15. Expo Hotel Barcelona*4       | 423 |                            | 32. Arts Hotel *5           |     | 483 |
|                  | 16. Barceló Sants*4              | 377 |                            |                             |     |     |



## SERVICES

Fira Barcelona is proud to present the official services supplied by the venue together with our skilful partners. Along with its state-of-the-art venue and team, Fira Barcelona has a large and outstanding experience with organisers and exhibitors services. We have established partnerships with a wide range of suppliers with long, proved and strong international experience. They can be as varied as audiovisuals, stand building, feature areas, streaming, security and any other possible service you might require.

All the official suppliers work in complete synchrony with Fira Barcelona, who coordinates and monitors their services. The know-how on the venue logistics and the close relationship with the operations team (sitting near the organiser's office during build up, event and dismantling) give us a strategical advantage in delivering the best service.



### DESIGN STANDS

CUSTOM-BUILT STAND: THE IDEAL FRAMEWORK FOR DOING BUSINESS

A new concept of stand construction and trade fair attendance management with the extensive experience and prestige of Fira Barcelona. We offer a comprehensive turnkey service to ensure your participation in the show is a success and take care of everything: from stand design and construction through to any other service you may need: audiovisual equipment, catering, hostesses, rigging, etc. [www.buildupfira.com](http://www.buildupfira.com)



### FIRA STORE

A CUSTOMIZED E-COMMERCE WEBPAGE THAT ALLOWS YOU TO SELL EVEN MORE

At ServiFira, Fira's Exhibitor Service Department, we take care of everything to make sure your involvement in the event is a complete success. In doing so, we offer you the most comprehensive and innovative catalogue of exhibitor services on the market. If your exhibitor needs furniture, plants, internet connections or staff, among others, these can be easily ordered through an e-commerce webpage adapted to your needs. [www.servifira.com](http://www.servifira.com)



### CATERING SERVICES

A WORLD OF MOUTHWATERING EXPERIENCES

We have put together a talented team from across the food industry to deliver the level of excellence our clients expect and deserve. Our young, innovative and dynamic team of professionals implements a specific strategy for the planning and management of catering services. We adapt to your needs regardless of the size or duration of the event. Mediterranean or International cuisine can be delivered at any space inside Fira and also at other emblematic spaces of the city. [www.gastrofira.com](http://www.gastrofira.com)



### AV SOLUTIONS

POWERFUL PARTNERS TO BOOST YOUR EVENT WITH ALL RANGE OF AV EQUIPMENT

Our main objective is to offer a comprehensive service with the highest quality. Our services range from design and planning to the technical production and final execution of the project, supplying technical professional video equipment, computers, sound, lighting and translation. Our suppliers are able to deliver the best products available in the market with constant research of the latest releases.

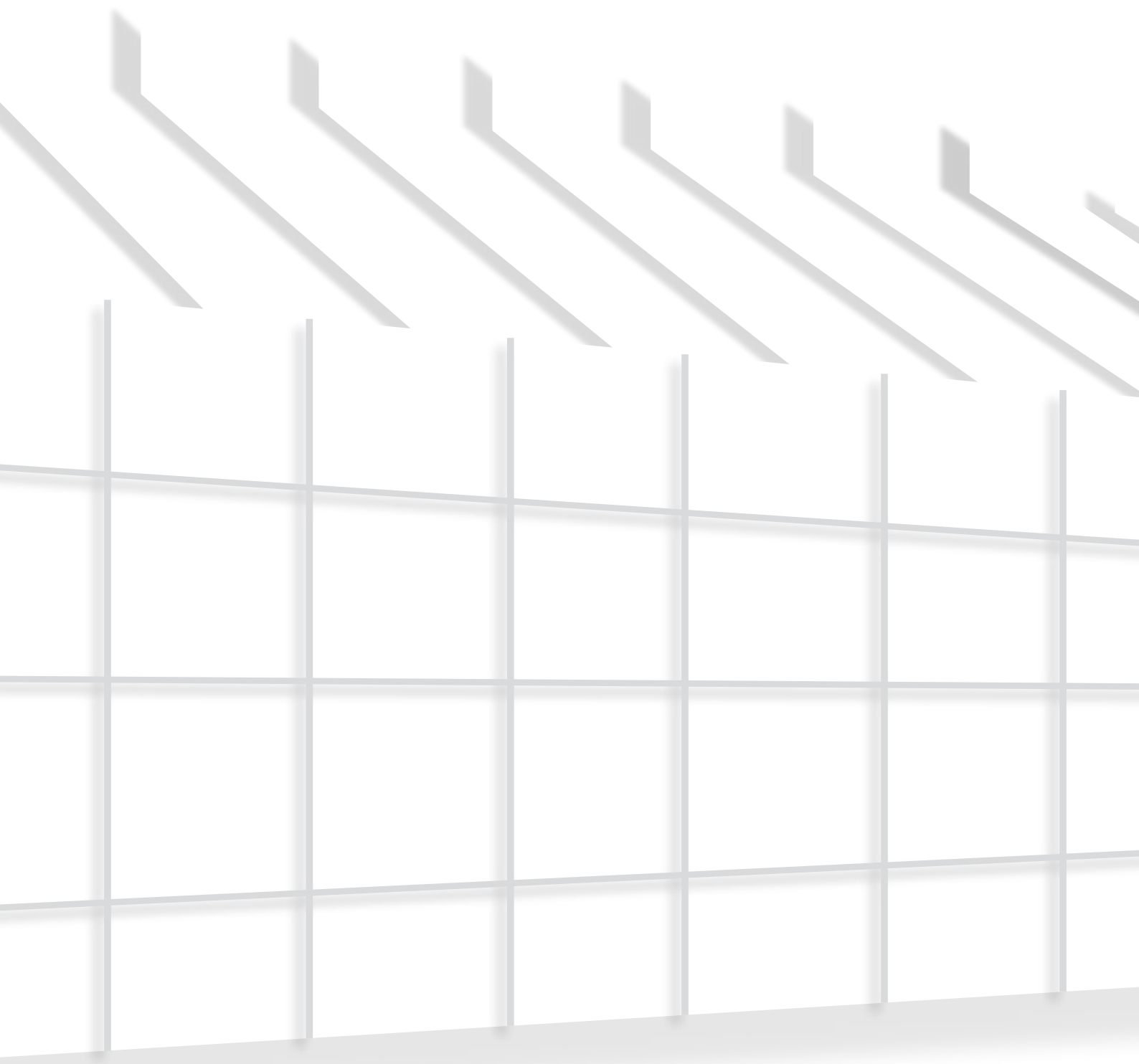


### OTHER SERVICES

ANYTHING YOU NEED

We can also offer event-related services such as carpet, rigging services, signage and advertising, design companies for feature areas, shell scheme stands and also support staff as hostesses, security and cleaning. Fira Barcelona boasts a series of highly-qualified teams to cover every possible requirement of an event. From the ICT or Catering to Exhibitor Services Department, Fira Barcelona puts everything in gear to ensure the success of every event.





**Fira Barcelona**

[guestevents@firabarcelona.com](mailto:guestevents@firabarcelona.com)

[www.firabarcelona-guestevents.com](http://www.firabarcelona-guestevents.com)

+34 93 233 20 00