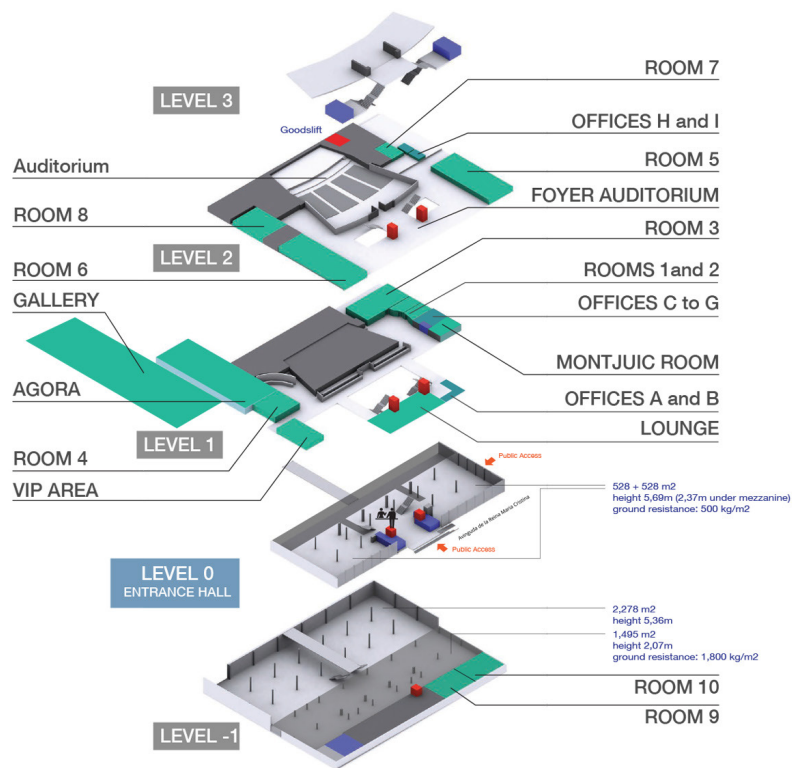
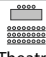
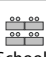
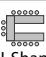
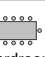




Capacities Palau de Congressos de Barcelona



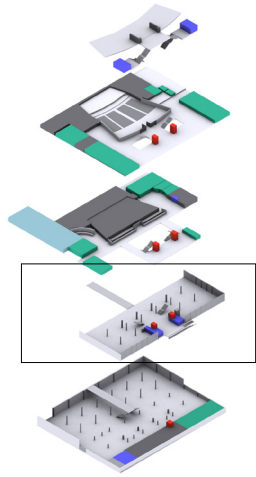
	 Theatre	 School	 U-Shape	 Boardroom	 Cabaret	 Cocktail	Surface	Height	Length	Width
Auditorium	1,609	-	-	-	-	-	1,820m ²	-	-	-
Room 1	-	-	-	16	-	-	39m ²	3.3	8.9	4.9
Room 2	-	-	-	16	-	-	39m ²	3.3	7.8	4.9
Room 3	150	80	19	34	40	134	183m ²	3.4	18.8	9.6
Room 4	75	56	14	16	20	64	104m ²	3.7	10.7	9.7
Room 5	250	132	36	-	60	200	281m ²	3.5	26	10
Room 6	320	156	36	-	70	200	315m ²	3.4	30	10
Room 7	-	-	20	24	-	-	42m ²	3.4	7.7	5.3
Room 8	100	70	16	22	-	90	143m ²	2.4	13	10
Room 9	100	50	16	-	40	90	138m ²	2.5	14.1	9.4
Room 10	100	50	16	-	30	80	124m ²	2.4	12.7	9.4
VIP Room	200	-	-	-	100	215	350m ²	2.4	31	11
Montjuic Room	48	18	-	28	30	-	63m ²	2.3	10.9	5.8
Agora*	-	-	-	-	-	-	584m ²	3.7	39	14
Lounge	-	-	-	-	-	140	210m ²	2.3	25	9.8
Gallery*	-	-	-	-	-	-	1633m ²	3.6 - 5.4	156	10.5
Foyer Auditorium	-	-	-	-	-	450	860m ²	3.6 / 2.35	-	-
Level -1	-	-	-	-	1,500	2,000	3,846m ²	5.5	78	49
Level 0	-	-	-	-	1,152	1,200	1,500m ²	5.7 & 2.37	76	30

The default layout of the rooms is theatre style, except rooms 1 & 2.

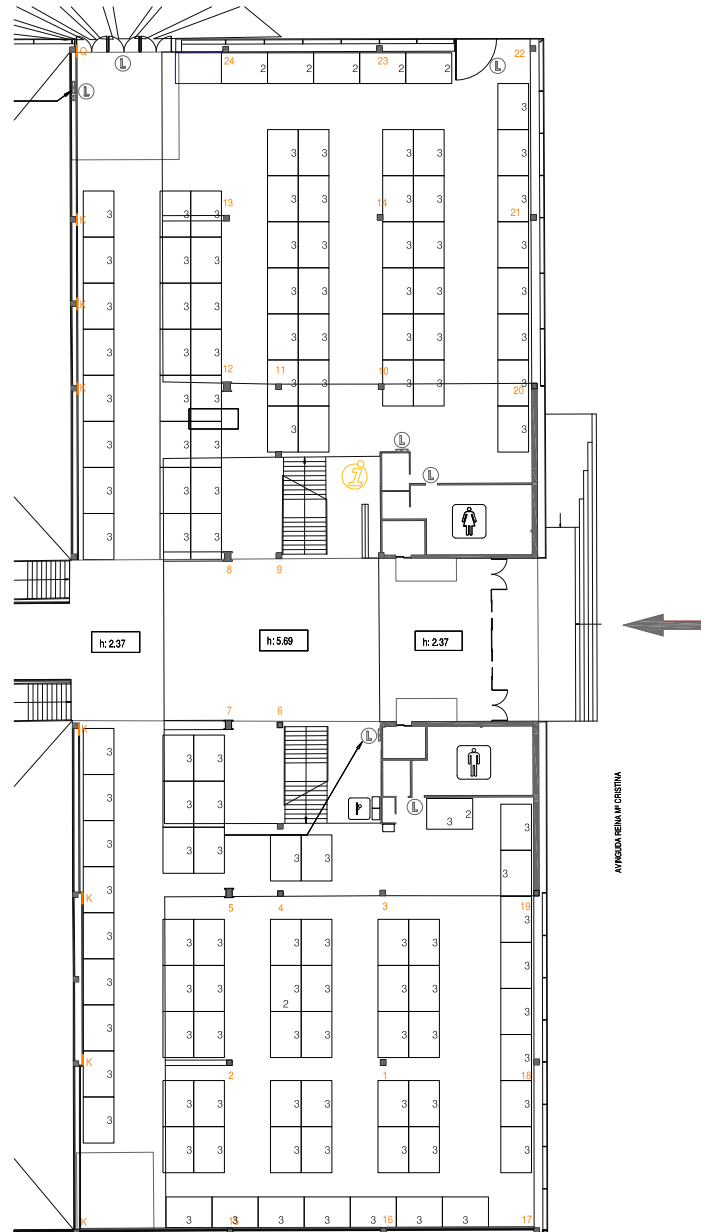
If you wish to have a different layout, please contact us.

* Capacities depend on the usage

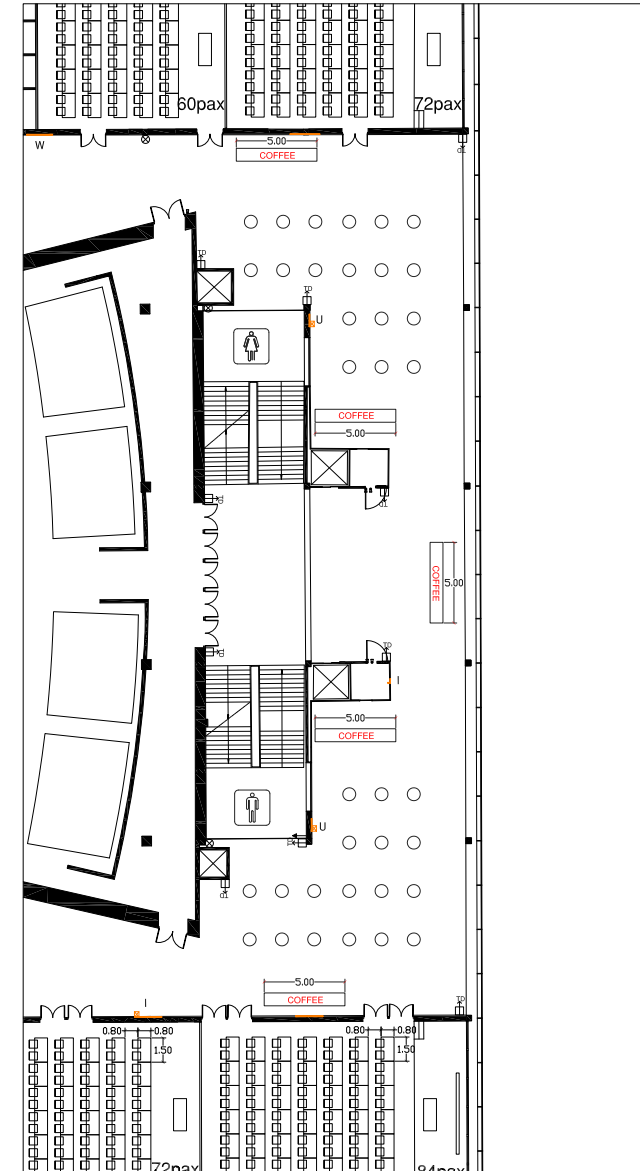
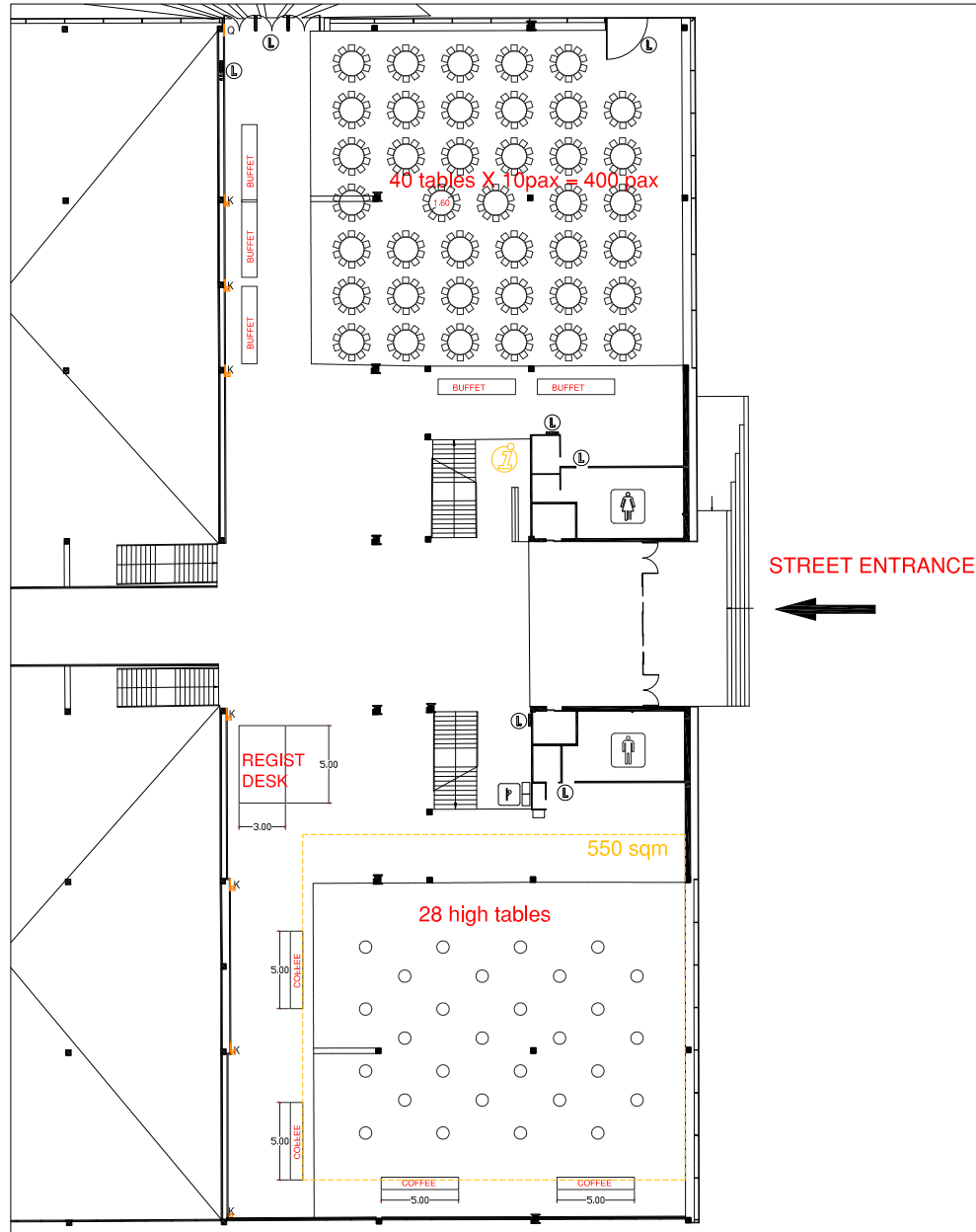
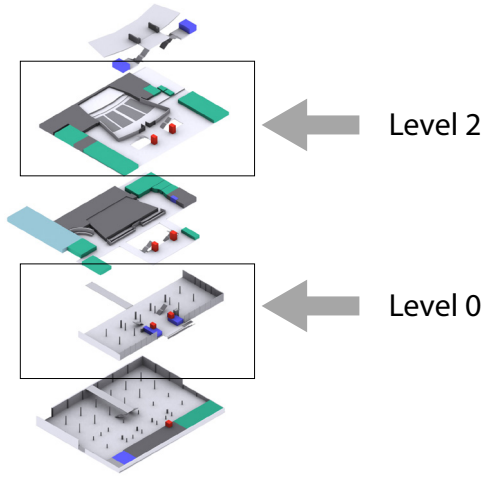
Stands (3 X 2 m)



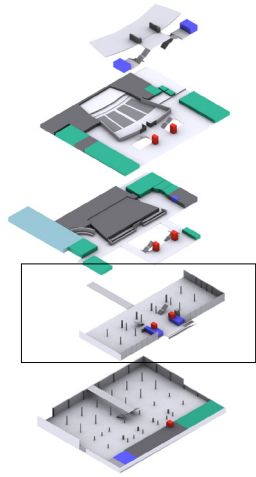
← Level 0



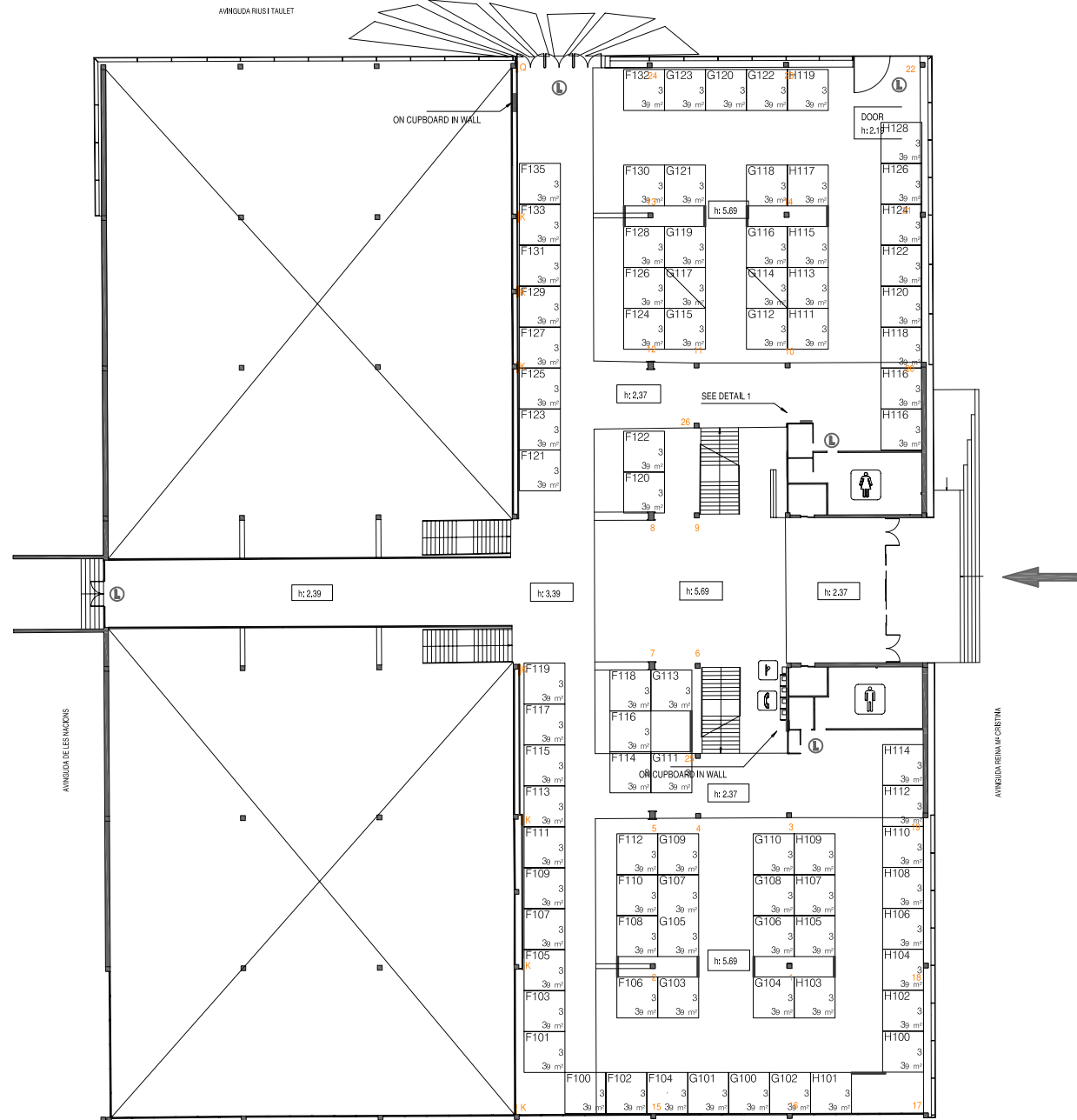
Networking Event 800 pax



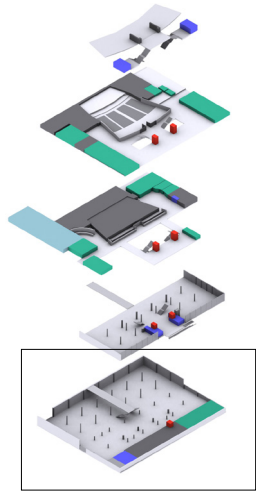
Stands (3 X 3 m)



← Level 0



8 Rooms 100 m² + 4 Rooms 60m²



← Level -1

